

## Contents

<b>ACKNOWLEDGEMENT</b> .....	i
<b>Background Information</b> .....	1
<b>Part I: Tourist Arrival Statistics 2015</b> .....	5
Table 1: Number of Tourist Arrivals, Revenue from Tourism, and Average Length of Stay, 1990-2015.....	5
Summary.....	6
Graph 1: Tourist Arrivals to Laos by Month 2015.....	7
Graph 2: Total number of Tourist arrivals from 2005-2015.....	7
Graph 3: Tourist arrivals to Laos by Month from 2013-2015.....	8
Graph 4: Percentage of Tourist Arrivals by Port of Entry.....	8
Table 2: Number of Tourist Arrivals by Region, 1995-2015.....	9
Table 3: Number of Tourist Arrivals to Laos by Category, 2014-2015.....	10
Table 4: Revenue from Tourism by Category, 2015.....	10
Table 5: Tourist Arrivals to Laos by Nationality (Percent Increase) 2009-2015.....	11
Table 6: Tourist Arrivals to Laos by Nationality (Market Share) 2009-2015.....	12
Market Situation.....	13
Table 7: Tourist Arrivals to Laos by Month in 2015.....	14
Table 8: Tourist Arrivals by Month through Category, 2012-2015.....	15
Table 9: Arrivals of non-resident visitors at national borders, by month.....	15
Table 10: Top Ten Generating Markets, 2012-2015.....	16
Table 11: Number of Domestic Tourists, 2013-2015.....	16
Table 12: Tourist Arrivals to Laos by Port of Entry in 2015.....	17
Table 13: Tourist Arrivals by Port of Entry through Category, 2011-2015.....	18
Table 14: Visitors by Province, 2008-2015.....	18
Table 15: Out-going Lao Travelers, 2013–2015.....	19
Table 16: Room Occupancy Rates by Province, 2008 – 2015.....	20
Table 17: Number of Hotels, Guesthouses, Resorts, Restaurants and Entertainment Establishments, 2009-2015.....	20
Table 18: Number of Accommodation Establishments, and Rooms 2009-2015.....	21
Table 19: Number of Hotels, Guesthouses, Rooms, and Beds, in 2015.....	21
Table 20: Visitor Arrivals to Luang Phabang Province.....	22
<b>Part II: International Visitor Survey</b>	
Table 21: Profile of International Tourist Arrivals to Laos, 2010-2015.....	23
<b>Part III: Tourism Projections</b>	
Table 22: Tourist Arrivals to Laos, Revenue from Tourism, Average Length of Stay by Time Trend from 1993-2020.....	25
Table 23: Tourist Arrivals Forecast by Season from 2005 to 2025.....	26
Table 24: Number of Laos Travel Agents 2009-2015.....	27
Table 25: Number of Tourist Sites in Laos in 2015.....	27
Table 26: International visitor arrivals by mode of transport and purpose of visit, 2012-2105.....	28
Table 27: Revenue from Tourism and Major Exports, 2011-2015.....	28
Ministry of Information, Culture and Tourism.....	29



## Background Information

This section includes background information on the statistical data contained in this report and on how they were obtained.

### Categories of Foreign Visitors

Foreign visitors to Laos are grouped into two categories: **international tourists and regional tourists**.

□ **International tourists** are those tourists who enter Laos with a valid passport and visa obtained from a Lao embassy or consulate abroad, or a visa obtained on arrival at an international border checkpoint.

□ **Regional tourists** are tourists from neighboring countries such as: Thailand, China, Myanmar, Vietnam and Cambodia, which share borders with Laos. They enter Laos with valid border passes or passports. Although some of them are called “day trippers,” they may make overnight stays.

From 1991 to 2002, there was a type of tourists called **Tourists for visa extension**. They are temporary workers in Thailand who cross over the border into Laos in order to extend their three-month visas before reentering Thailand. These tourists are mainly from India, Pakistan, Sri Lanka, Nepal and Bangladesh. However, from 2003 this type of tourist has been reclassified as “international tourists”.

### Data Collection

□ From 1990 to 1994, statistical data on **international tourists** were collected from embarkation/disembarkation cards of the immigration department and from documents received by the Lao National Tourism Administration (LNTA) from local travel companies. These documents contain the following information:

Name of Travel Company

Name of tourist

Sex

Passport number

Nationality

Carrier

Duration of stay

Port of entry

Place of stay





Since 1995, data on **international tourists** have been collected only from embarkation/disembarkation cards of the immigration department.

□ Data on **regional tourists** were collected from tabulations sent to the Tourism Development Department (TDD) by immigration officers at each border checkpoint.

□ Data on **tourists for visa extension** were obtained from information received by the TDD from local travel companies responsible for processing the documents of tourists for visa extension.

□ Data on tourist profiles, length of stay, and average expenditure per person per day were all calculated using statistical surveys conducted periodically through sampling survey methods.

## Entry Ports

### *By air:*

□ **Wattay International Airport** is the main entry point by air for international tourists; flights are available through Thai Airways, Lao Airlines, Vietnam Airlines, Air Asia, China Eastern Airlines and Bangkok Airways from Vientiane to Bangkok, Chiang Mai, Hanoi, Hochiminh, Kuala Lumpur, Kunming, Phnom Penh, Siem Reap, Seoul, Singapore and Guangzhou.

□ **LuangPrabang International Airport** is now an international entry point, and regular flights are available from LuangPrabang to Vientiane, Chiang Mai, Bangkok, Hanoi, Jinghong, Chenedu, Siemreap, Singapore and Incheon.

□ **Savannakhet International Airport**, the only international flight on this route is from Savannakhet to Bangkok and vice-versa operated by Lao Airlines.

□ **Pakse International Airport** is stopover point from Vientiane to Phnom Penh, Siem Reap, Hochiminh and Bangkok. Lao Airlines flies daily from Pakse to Bangkok via Savannakhet.

□ In addition, there are several **provincial airports**, used only for domestic flights within the Lao PDR. (LuangPrabang, Oudomxay, Bokeo, Huaphanh, Xiengkhouang and Attapeu).





## ***By land:***

### **From Thailand:**

- Mittaphab (Friendship Bridge I)**, Vientiane Capital City, the major point of entry for regional and international tourists.
- Thanaleng Railway Station**, Vientiane Capital City.
- HoueiXayand Golden Triage**, Bokeo Province.
- Pakxan**, Bolikhamxay Province.
- Mittaphab (Friendship Bridge III)**, Khammouane Province.
- Mittaphab (Friendship Bridge II)**, Savannakhet Province.
- VangTao**, Champassack Province.
- Nam Heuang Bridge, PhanhKeo and Nam Ngeun**, Sayabouli Province.

### **From China:**

- Boten**, LuangNamtha Province.
- Lantoui**, Phongsali Province.

### **From Vietnam:**

- Dane Savanh**, Savannakhet Province, the major point of entry for Vietnamese travelers.
- Nam Kanh**, Xiengkhouang Province (regional border checkpoint only).
- Nam Phao**, Bolikhamxay Province.
- Na Phao**, Khammouane Province.
- NamSouy**, Huaphanh Province.
- Pang Hok**, Phongsali Province.
- Phoukeua**, Attapeu Province.
- Lalai**, Saravanh Province.

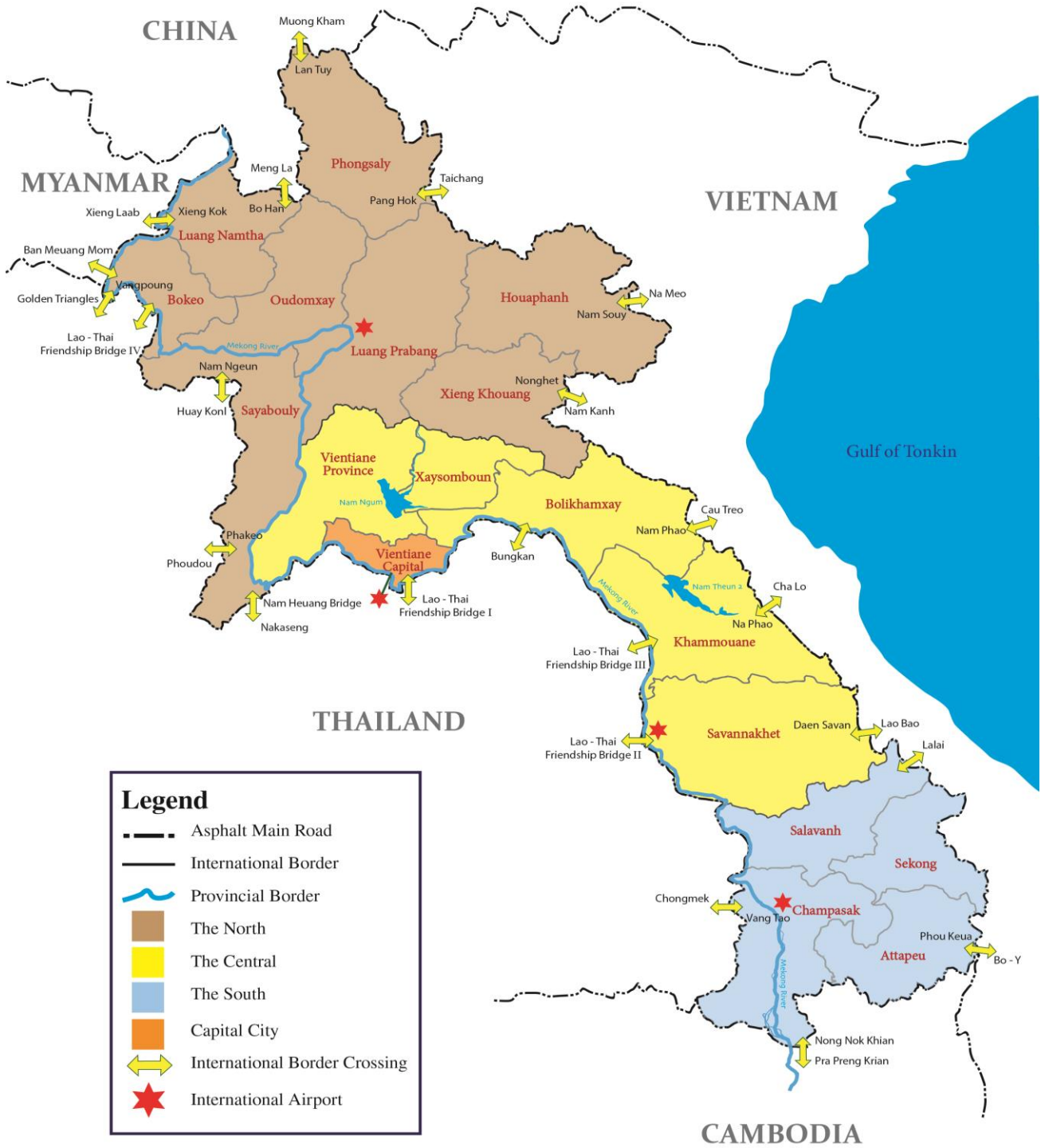
### **From Cambodia:**

- NongNokKhian**, Champassack Province.





# Laos International Border Check Points





## Part I: Tourist Arrival Statistics 2015

### Table 1: Number of Tourist Arrivals, Revenue from Tourism, and Average Length of Stay, 1990-2015

Year	Number of Tourist Arrivals	(%) Δ	Average Length of Stay (Days) for International Tourists	Average Length of Stay (Days) for Regional Tourists	Average Length of Stay (Days) for the Total Tourist Arrivals	Revenue from Tourism (Dollars)
<b>1990</b>	<b>14,400</b>	<b>NA</b>	<b>NA</b>	<b>NA</b>	<b>NA</b>	<b>NA</b>
1991	37,613	161	NA	NA	NA	2,250,000
1992	87,571	133	NA	NA	NA	4,510,000
1993	102,946	18	3.5	NA	NA	6,280,000
1994	146,155	42	5.1	NA	NA	7,557,600
<b>1995</b>	<b>346,460</b>	<b>137</b>	<b>4.3</b>	<b>NA</b>	<b>NA</b>	<b>24,738,480</b>
1996	403,000	16	4.8	1.8	3.3	43,592,263
1997	463,200	15	5.0	3.0	4.0	73,276,904
1998	500,200	8	5.0	2.4	3.7	79,960,145
1999	614,278	23	5.5	2.4	4.0	97,265,324
<b>2000</b>	<b>737,208</b>	<b>20</b>	<b>5.5</b>	<b>2.4</b>	<b>4.0</b>	<b>113,898,285</b>
2001	673,823	-9	8.0	2.4	5.2	103,786,323
2002	735,662	9	6.5	2.1	4.3	113,409,883
2003	636,361	-14	6.0	2.0	4.0	87,302,412
2004	894,806	41	6.5	2.0	4.3	118,947,707
<b>2005</b>	<b>1,095,315</b>	<b>22</b>	<b>7.0</b>	<b>2.0</b>	<b>4.5</b>	<b>146,770,074</b>
2006	1,215,106	11	7.0	2.0	4.5	173,249,896
2007	1,623,943	34	7.0	2.0	4.5	233,304,695
2008	1,736,787	7	6.5	2.0	4.3	275,515,758
2009	2,008,363	16	7.0	2.0	4.5	267,700,224
<b>2010</b>	<b>2,513,028</b>	<b>25</b>	<b>7.0</b>	<b>2.0</b>	<b>4.5</b>	<b>381,669,031</b>
2011	2,723,564	8	7.0	2.0	4.5	406,184,338
2012	3,330,072	22	7.2	2.0	4.6	506,022,586
2013	3,779,490	13	8.4	2.0	5.2	595,909,127
2014	4,158,719	10	7.9	2.0	4.9	641,636,543
<b>2015</b>	<b>4,684,429</b>	<b>13</b>	<b>7.5</b>	<b>2.0</b>	<b>4.75</b>	<b>725,365,681</b>





## Summary

Because of its strategic location (in the center of Indochina and South-East Asia), Lao PDR is considered to be a “add on destination” Therefore, Lao tourism performances are likely influenced by several factors at regional level, they are worldwide tourism trends, the movement of tourists to the region climate change, political and economic circumstances, natural disasters, terrorist attacks, and other, the development of unique tourism products for Laos, tourists circuits living Laos with neighboring countries and increase in tourism cooperation with regional countries will be the essential factors to contribute to the success of Lao tourism.

In general, the number of tourist arrivals to Laos increase constantly with an average growth rate of 13.90%. Even though, there are some substantial and slight changes in certain periods (in 2001 because of terrorist attacks on September 11 in the United States and 2003 due to SARS epidemic in Asia) the number of tourist arrivals to Laos continues grow gradually.

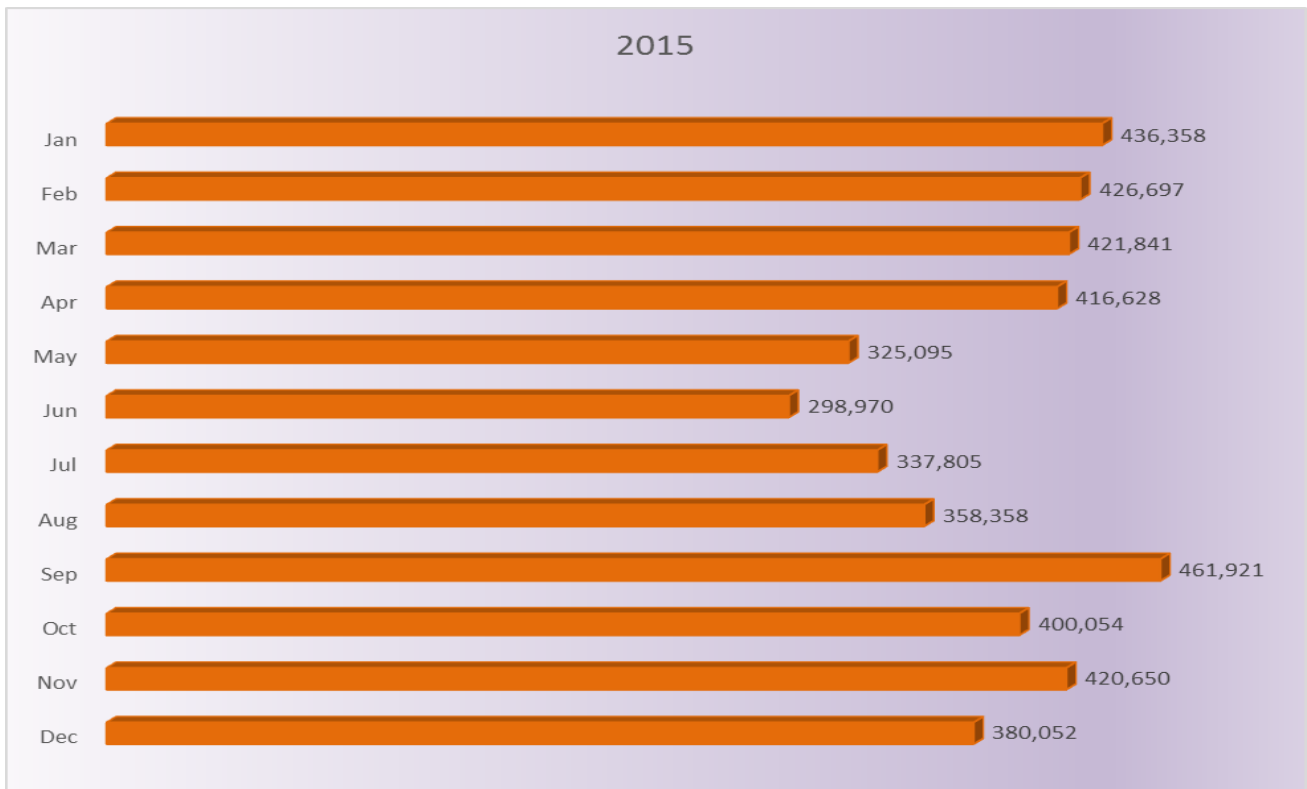
Of the total number of tourist arrivals to Laos in 2015, 875,246 used the service of Lao travel agent (206,351 in 2014)



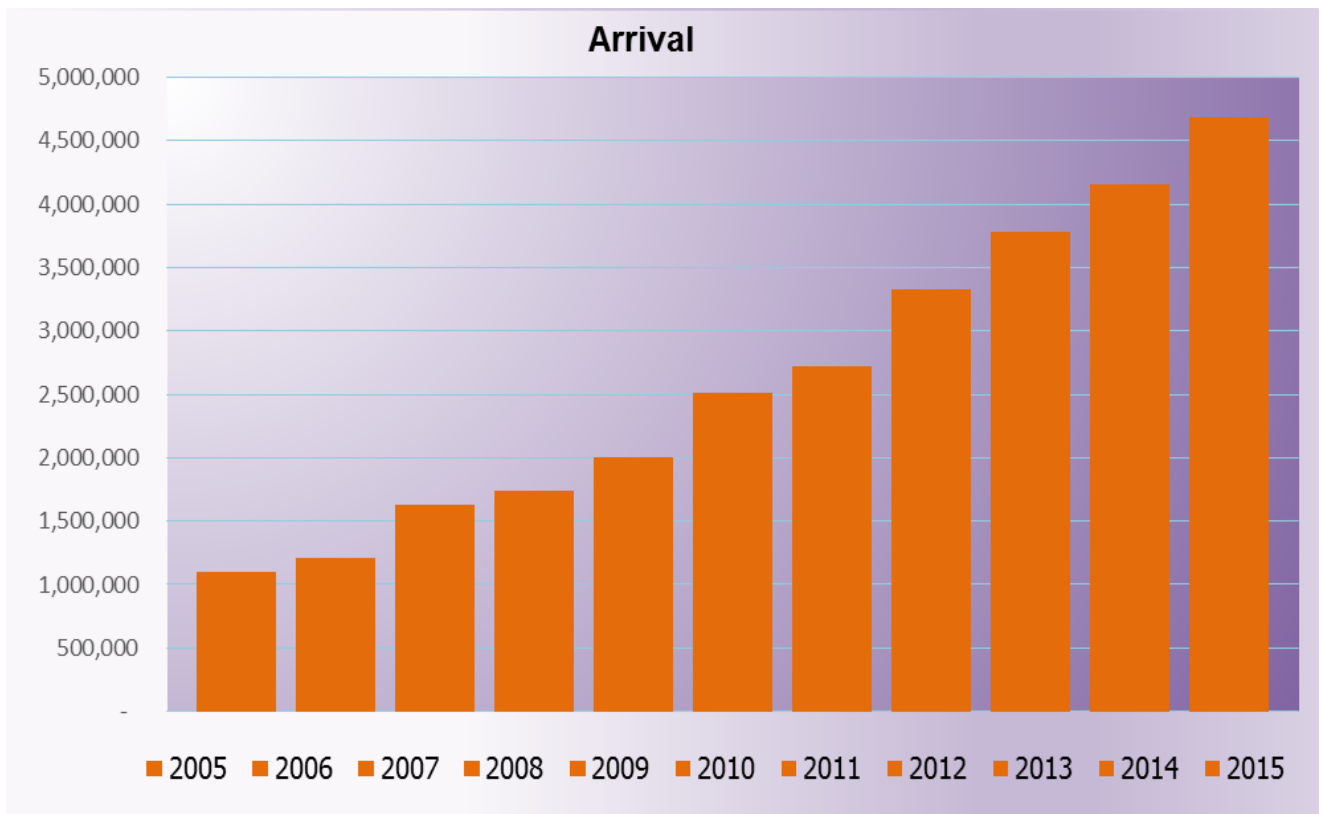




**Graph 1: Tourist Arrivals to Laos by Month 2015**



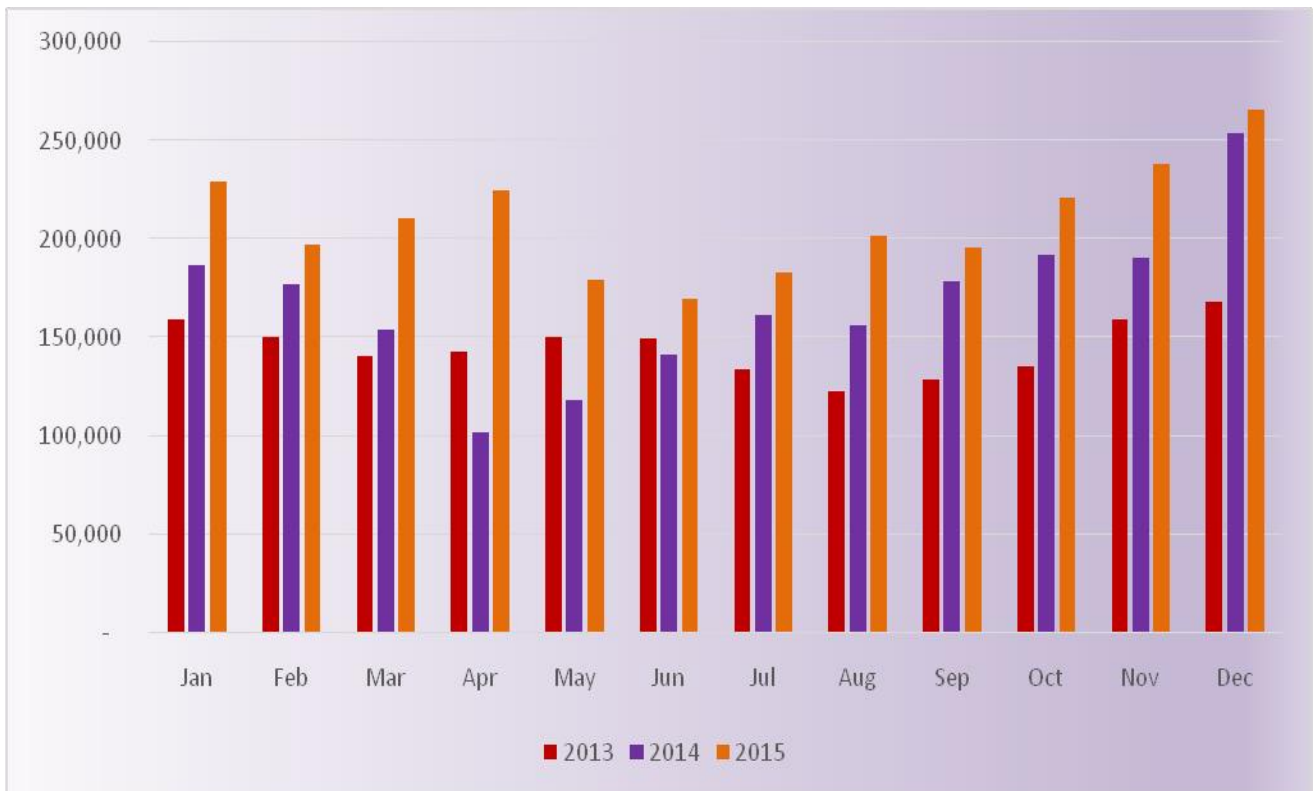
**Graph 2: Total number of Tourist arrivals from 2005-2015**



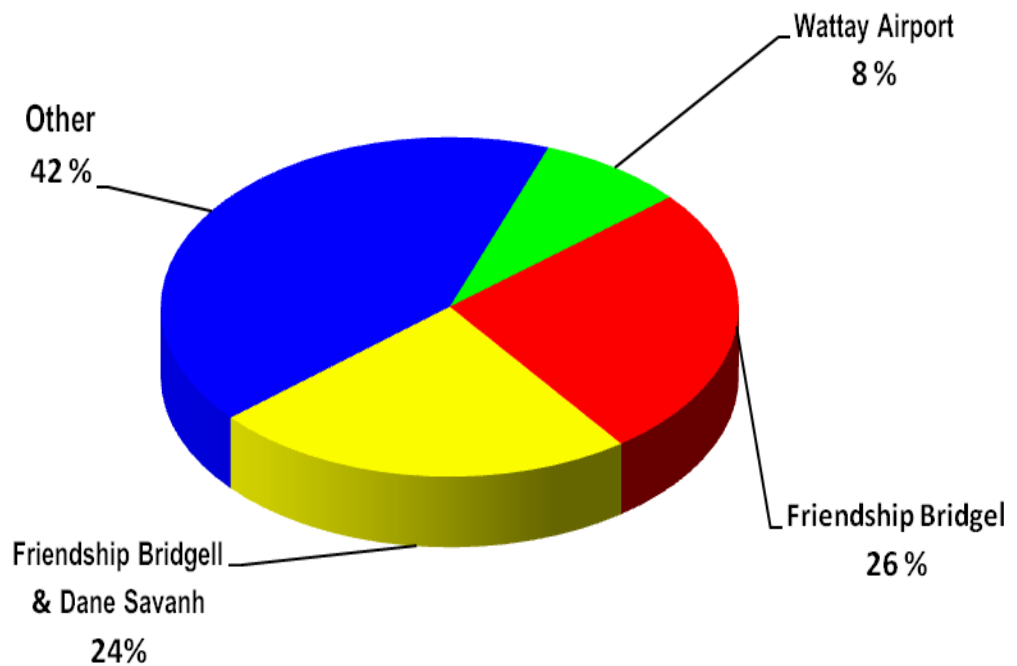




**Graph 3: Tourist arrivals to Laos by Month from 2013-2015**



**Graph 4: Percentage of Tourist Arrivals by Port of Entry**



**Table 2: Number of Tourist Arrivals by Region, 1995-2015**

Year	Asia and Pacific	Europe	The Americas	Africa and Middle East	Total
<b>1995</b>	<b>314,470</b>	<b>20,635</b>	<b>11,019</b>	<b>336</b>	<b>346,460</b>
1996	357,692	30,582	14,102	624	403,000
1997	403,781	38,583	18,213	2,623	463,200
1998	421,196	52,076	25,326	1,602	500,200
1999	510,703	68,564	31,780	3,231	614,278
<b>2000</b>	<b>604,254</b>	<b>86,462</b>	<b>42,111</b>	<b>4,381</b>	<b>737,208</b>
2001	553,249	80,736	34,370	5,468	673,823
2002	579,031	101,924	46,704	8,003	735,662
2003	498,185	93,960	39,453	4,763	636,361
2004	730,107	112,092	47,153	5,454	894,806
<b>2005</b>	<b>899,273</b>	<b>131,326</b>	<b>60,061</b>	<b>4,655</b>	<b>1,095,315</b>
2006	1,008,663	138,935	60,883	6,625	1,215,106
2007	1,406,456	147,667	61,463	8,357	1,623,943
2008	1,482,499	168,756	75,266	10,266	1,736,787
2009	1,820,571	130,176	53,348	4,268	2,008,363
<b>2010</b>	<b>2,260,026</b>	<b>178,140</b>	<b>67,291</b>	<b>7,571</b>	<b>2,513,028</b>
2011	2,464,651	181,539	69,990	7,384	2,723,564
2012	3,061,115	185,802	75,851	7,304	3,330,072
2013	3,473,111	212,566	85,899	7,914	3,779,490
2014	3,854,441	209,331	86,027	8,920	4,158,719
<b>2015</b>	<b>4,367,480</b>	<b>217,307</b>	<b>88,987</b>	<b>10,655</b>	<b>4,684,429</b>
<b>Growth Rate</b>	<b>14.05 %</b>	<b>12.49 %</b>	<b>11.00 %</b>	<b>18.86 %</b>	<b>13.90 %</b>

**Market share of tourist arrivals by region (%), 2006-2015**

Year	2006	2007	2008	2009	2010	2011	2012	2013	2014	2015
<b>Region</b>	100	100	100	100	100	100	100	100	100	100
<b>Asia and Pacific</b>	83.01	86.61	85.36	90.65	89.93	90.49	91.92	91.89	92.68	<b>93.23</b>
<b>Europe</b>	11.43	9.09	9.72	6.48	7.09	6.67	5.58	5.62	5.03	<b>4.64</b>
<b>Americas</b>	5.01	3.78	4.33	2.66	2.68	2.57	2.28	2.27	2.07	<b>1.90</b>
<b>Africa and Middle East</b>	0.55	0.51	0.59	0.21	0.30	0.27	0.22	0.21	0.21	<b>0.23</b>

**Change over previous years (%)**

Year	06/05	07/06	08/07	09/08	10/09	11/10	12/11	13/12	14/13	15/14
<b>Region</b>	11	34	7	16	25	8	22	13	10	<b>13</b>
<b>Asia and Pacific</b>	12	39	5	23	24	9	24	13	11	<b>13</b>
<b>Europe</b>	6	6	14	-23	37	2	2	14	-2	<b>4</b>
<b>Americas</b>	1	1	22	-29	26	4	8	13	0	<b>3</b>
<b>Africa and Middle East</b>	42	26	23	-58	77	-2	-1	8	13	<b>19</b>





**Table 3: Number of Tourist Arrivals to Laos by Category, 2014-2015**

Category	Border Pass		Border Pass		Passport		Total	
	Day tripper	Stay Overnight						
	2015		2014	2015	2014	2015	2014	2015
<b>Grand Total</b>	<b>1,141,102</b>	<b>321,849</b>	<b>1,299,451</b>	<b>1,462,951</b>	<b>2,859,268</b>	<b>3,221,478</b>	<b>4,158,719</b>	<b>4,684,429</b>
<b>International Tourist</b>					<b>568,844</b>	<b>643,062</b>	<b>568,844</b>	<b>643,062</b>
<b>Regional Tourist</b>	<b>1,141,102</b>	<b>321,849</b>	<b>1,299,451</b>	<b>1,462,951</b>	<b>2,290,424</b>	<b>2,578,416</b>	<b>3,589,875</b>	<b>4,041,367</b>
Thailand	906,620	255,713	1,080,604	1,162,333	963,157	1,159,019	2,043,761	2,321,352
Vietnam	98,983	27,918	92,114	126,901	1,016,218	1,061,053	1,108,332	1,187,954
China	132,519	37,377	123,774	169,896	298,666	341,540	422,440	511,436
Cambodia	2,980	841	2,959	3,821	12,383	16,804	15,342	20,625

**Table 4: Revenue from Tourism by Category, 2015**

Category	Number of Tourist Arrivals (person)	Average Length of Stay (days)	Average Expenditure per Person per day (dollars)	Revenue from Tourism in 2015 (dollars)
<b>Total</b>	<b>4,684,429</b>	<b>4.9</b>	<b>52.06</b>	<b>725,365,681</b>
<b>International Tourist</b>	<b>643,062</b>	<b>7.5</b>	<b>76.5</b>	<b>368,956,823</b>
<b>Regional Tourist</b>	<b>4,041,367</b>			<b>356,408,858</b>
Thai (Passport)	1,159,019	3	52	180,806,964
Thai (Border pass)	1,162,333	1	20	23,246,660
Vietnam (Passport)	1,061,053	3	30	95,494,770
Vietnam (Day Tripper)	126,901	1	12	1,522,812
China (Passport)	341,540	3	50	51,231,000
China (Day Tripper)	169,896	1	15	2,548,440
Cambodia (Passport)	16,804	3	30	1,512,360
Cambodia (Border pass)	3,821	1	12	45,852





**Table 5: Tourist Arrivals to Laos by Nationality  
(Percent Increase) 2009-2015**

Country of Origin	2009 Number	2010 Number	2011 Number	2012 Number	2013 Number	2014 Number	2015 Number	% Δ 15/14
<b>Grand Total</b>	<b>2,008,363</b>	<b>2,513,028</b>	<b>2,723,564</b>	<b>3,330,072</b>	<b>3,779,490</b>	<b>4,158,719</b>	<b>4,684,429</b>	<b>13</b>
<b>Asia and Pacific</b>	<b>1,820,571</b>	<b>2,260,026</b>	<b>2,464,651</b>	<b>3,061,115</b>	<b>3,473,111</b>	<b>3,854,441</b>	<b>4,367,480</b>	<b>13</b>
<b>ASEAN</b>	<b>1,611,009</b>	<b>1,990,932</b>	<b>2,191,224</b>	<b>2,712,478</b>	<b>3,041,233</b>	<b>3,224,080</b>	<b>3,588,538</b>	<b>11</b>
Brunei	267	197	354	533	582	564	865	53
Cambodia	7,530	6,908	7,561	15,140	12,180	15,342	20,625	34
Indonesia	3,158	2,245	3,338	4,256	4,888	4,812	6,019	25
Malaysia	13,816	15,427	17,702	22,785	26,035	24,312	24,095	-1
Myanmar	1,794	1,652	1,765	1,730	1,947	2,157	2,661	23
Philippines	8,331	10,341	11,847	14,281	16,318	15,179	16,709	10
Singapore	5,286	6,087	7,130	10,545	9,685	9,621	8,258	-14
Thailand	1,274,064	1,517,064	1,579,941	1,937,612	2,059,434	2,043,761	2,321,352	14
Vietnam	296,763	431,011	561,586	705,596	910,164	1,108,332	1,187,954	7
<b>Non-ASEAN</b>	<b>209,562</b>	<b>269,094</b>	<b>273,427</b>	<b>348,637</b>	<b>431,878</b>	<b>630,361</b>	<b>778,942</b>	<b>24</b>
Australia	24,209	30,538	31,874	33,878	35,450	44,964	34,665	-23
China	128,226	161,854	150,791	199,857	245,033	422,440	511,436	21
India	2,280	3,321	3,227	3,275	4,551	4,547	5,492	21
Japan	28,081	34,076	37,883	42,026	48,644	44,877	43,826	-2
Korea	17,876	27,312	34,707	53,829	81,799	96,085	165,328	72
New Zealand	3,479	4,393	4,885	5,418	5,451	5,200	4,798	-8
Taiwan	2,519	3,346	5,029	3,996	4,771	5,478	6,131	12
Others	2,892	4,254	5,031	6,358	6,179	6,770	7,266	7
<b>Europe</b>	<b>130,176</b>	<b>178,140</b>	<b>181,539</b>	<b>185,802</b>	<b>212,566</b>	<b>209,331</b>	<b>217,307</b>	<b>4</b>
Austria	2,450	2,565	3,801	2,860	3,339	3,835	3,910	2
Belgium	3,868	5,012	5,241	6,284	6,046	5,343	5,289	-1
Denmark	2,977	5,359	4,769	5,054	4,586	5,065	4,491	-11
Finland	1,985	2,470	2,742	2,962	2,735	3,751	3,013	-20
France	31,775	44,844	44,399	46,903	52,411	52,146	55,151	6
Germany	17,710	22,583	21,280	23,417	29,250	29,800	31,897	7
Greece	537	578	451	366	433	498	878	76
Italy	5,481	7,075	6,977	6,289	8,822	9,710	8,990	-7
Netherlands	8,504	10,032	9,164	9,283	10,899	8,683	8,429	-3
Norway	2,221	2,845	3,178	3,307	3,531	3,606	3,499	-3
Russia	2,861	4,835	7,019	8,642	11,649	13,340	12,532	-6
Spain	2,962	4,195	4,652	4,208	5,127	5,219	4,856	-7
Sweden	4,150	6,261	5,926	6,676	5,194	5,804	5,465	-6
Switzerland	5,827	8,622	9,710	10,096	10,586	9,064	9,777	8
United Kingdom	27,044	37,272	35,622	35,694	41,741	39,061	41,508	6
Others	9,824	13,592	16,608	13,761	16,217	14,406	17,622	22
<b>The Americas</b>	<b>53,348</b>	<b>67,291</b>	<b>69,990</b>	<b>75,851</b>	<b>85,899</b>	<b>86,027</b>	<b>88,987</b>	<b>3</b>
Canada	10,955	13,637	14,422	16,744	17,132	19,096	19,785	4
USA	39,339	49,782	50,092	53,380	61,608	61,460	63,058	3
Others	3,054	3,872	5,476	5,727	7,159	5,471	6,144	12
<b>Africa and Middle East</b>	<b>4,268</b>	<b>7,571</b>	<b>7,384</b>	<b>7,304</b>	<b>7,914</b>	<b>8,920</b>	<b>10,655</b>	<b>19</b>
Israel	2,236	3,700	4,232	3,241	3,364	4,068	4,163	2
Others	2,032	3,871	3,152	4,063	4,550	4,852	6,492	34





**Table 6: Tourist Arrivals to Laos by Nationality (Market Share) 2009-2015**

Country of Origin	2009	2010	2011	2012	2013		2014		2015	
	Number	Number	Number	Number	Number	%	Number	%	Number	%
<b>Grand Total</b>	<b>2,008,363</b>	<b>2,513,028</b>	<b>2,723,564</b>	<b>3,330,072</b>	<b>3,779,490</b>	<b>100%</b>	<b>4,158,719</b>	<b>100%</b>	<b>4,684,429</b>	<b>100%</b>
<b>Asia and Pacific</b>	<b>1,820,571</b>	<b>2,260,026</b>	<b>2,464,651</b>	<b>3,061,115</b>	<b>3,473,111</b>	<b>91.89</b>	<b>3,854,441</b>	<b>92.68</b>	<b>4,367,480</b>	<b>93.23</b>
ASEAN	1,611,009	1,990,932	2,191,224	2,712,478	3,041,233	80.47	3,224,080	77.53	3,588,538	76.61
Brunei	267	197	354	533	582	0.02	564	0.01	865	0.02
Cambodia	7,530	6,908	7,561	15,140	12,180	0.32	15,342	0.37	20,625	0.44
Indonesia	3,158	2,245	3,338	4,256	4,888	0.13	4,812	0.12	6,019	0.13
Malaysia	13,816	15,427	17,702	22,785	26,035	0.69	24,312	0.58	24,095	0.51
Myanmar	1,794	1,652	1,765	1,730	1,947	0.05	2,157	0.05	2,661	0.06
Philippines	8,331	10,341	11,847	14,281	16,318	0.43	15,179	0.36	16,709	0.36
Singapore	5,286	6,087	7,130	10,545	9,685	0.26	9,621	0.23	8,258	0.18
Thailand	1,274,064	1,517,064	1,579,941	1,937,612	2,059,434	54.49	2,043,761	49.14	2,321,352	49.55
Vietnam	296,763	431,011	561,586	705,596	910,164	24.08	1,108,332	26.65	1,187,954	25.36
<b>Non-ASEAN</b>	<b>209,562</b>	<b>269,094</b>	<b>269,094</b>	<b>348,637</b>	<b>431,878</b>	<b>11.43</b>	<b>630,361</b>	<b>15.16</b>	<b>778,942</b>	<b>16.63</b>
Australia	24,209	30,538	31,874	33,878	35,450	0.94	44,964	1.08	34,665	0.74
China	128,226	161,854	150,791	199,857	245,033	6.48	422,440	10.16	511,436	10.92
India	2,280	3,321	3,227	3,275	4,551	0.12	4,547	0.11	5,492	0.12
Japan	28,081	34,076	37,883	42,026	48,644	1.29	44,877	1.08	43,826	0.94
Korea	17,876	27,312	34,707	53,829	81,799	2.16	96,085	2.31	165,328	3.53
New Zealand	3,479	4,393	4,885	5,418	5,451	0.14	5,200	0.13	4,798	0.10
Taiwan	2,519	3,346	5,029	3,996	4,771	0.13	5,478	0.13	6,131	0.13
Others	2,892	4,254	5,031	6,358	6,179	0.16	6,770	0.16	7,266	0.16
<b>Europe</b>	<b>130,176</b>	<b>178,140</b>	<b>181,539</b>	<b>185,802</b>	<b>212,566</b>	<b>5.62</b>	<b>209,331</b>	<b>5.03</b>	<b>217,307</b>	<b>4.64</b>
Austria	2,450	2,565	3,801	2,860	3,339	0.09	3,835	0.09	3,910	0.08
Belgium	3,868	5,012	5,241	6,284	6,046	0.16	5,343	0.13	5,289	0.11
Denmark	2,977	5,359	4,769	5,054	4,586	0.12	5,065	0.12	4,491	0.10
Finland	1,985	2,470	2,742	2,962	2,735	0.07	3,751	0.09	3,013	0.06
France	31,775	44,844	44,399	46,903	52,411	1.39	52,146	1.25	55,151	1.18
Germany	17,710	22,583	21,280	23,417	29,250	0.77	29,800	0.72	31,897	0.68
Greece	537	578	451	366	433	0.01	498	0.01	878	0.02
Italy	5,481	7,075	6,977	6,289	8,822	0.23	9,710	0.23	8,990	0.19
Netherlands	8,504	10,032	9,164	9,283	10,899	0.29	8,683	0.21	8,429	0.18
Norway	2,221	2,845	3,178	3,307	3,531	0.09	3,606	0.09	3,499	0.07
Russia	2,861	4,835	7,019	8,642	11,649	0.31	13,340	0.32	12,532	0.27
Spain	2,962	4,195	4,652	4,208	5,127	0.14	5,219	0.13	4,856	0.10
Sweden	4,150	6,261	5,926	6,676	5,194	0.14	5,804	0.14	5,465	0.12
Switzerland	5,827	8,622	9,710	10,096	10,586	0.28	9,064	0.22	9,777	0.21
United Kingdom	27,044	37,272	35,622	35,694	41,741	1.10	39,061	0.94	41,508	0.89
Others	9,824	13,592	16,608	13,761	16,217	0.43	14,406	0.35	17,622	0.38
<b>The Americas</b>	<b>53,348</b>	<b>67,291</b>	<b>69,990</b>	<b>75,851</b>	<b>85,899</b>	<b>2.27</b>	<b>86,027</b>	<b>2.07</b>	<b>88,987</b>	<b>1.90</b>
Canada	10,955	13,637	14,422	16,744	17,132	0.45	19,096	0.46	19,785	0.42
USA	39,339	49,782	50,092	53,380	61,608	1.63	61,460	1.48	63,058	1.35
Others	3,054	3,872	5,476	5,727	7,159	0.19	5,471	0.13	6,144	0.13
<b>Africa and Middle East</b>	<b>4,268</b>	<b>7,571</b>	<b>7,384</b>	<b>7,304</b>	<b>7,914</b>	<b>0.21</b>	<b>8,920</b>	<b>0.21</b>	<b>10,655</b>	<b>0.23</b>
Israel	2,236	3,700	4,232	3,241	3,364	0.09	4,068	0.10	4,163	0.09
Others	2,032	3,871	3,152	4,063	4,550	0.12	4,852	0.12	6,492	0.14





## Market Situation

The year 2015 is another remarkable year for tourism in Laos as can be seen the percentage of increase was higher than that of the same period, overall number of tourist arrival increased 13% over 2014 (compared to 10% from 2013 to 2014).

In general, while the total number of tourist arrivals of the main markets increased, the market share of tourists from long haul generating countries slightly decreased Europe 4,64% (5,03% 2014), The America 1,90% (2,07% in 2014) and Africa and Middle East 0,23% (0,21% in 2014).

Visitors from neighboring countries (ASEAN) represented the largest number of tourists in 2015 (3,588,533) or about 77% of the total tourist arrivals, an increase of 11% over 2014. In the same way, international tourists, considered the most important market for Lao tourism, grew from 568,844 in 2014 to 643,062 in 2015 or about 13% of increase.

It is important to notice that the market share for European and American markets deceased from 5,03% to 4,64% and from 2,07% to 1,90% respectively.

### 1. Asia and Pacific

Tourists from Asia and Pacific represented the largest portion of visitors in 2015 about 93% of the total tourist arrivals; it recorded 13% increase over 2014. The most remarkable change was the increase in number of visitors from Korea (increase 72% compared to that of 2014) which represented a share of 4%. The priority markets for tourism in Laos from Asia and Pacific are Thailand, Vietnam, Korea, China, Japan, Australia, Malaysia and Cambodia. It is interesting to notice that some important markets from Asia experienced a decrease (Japan - 2% and Australia -23%).

### 2. Europe

Overall, the market share for Europe went up a little bit 5,03 over 2014. However, market share decreased from 5,02% to 5,03%. This caused by the slight increase of all European markets such as: France 6%, UK 56% and Germany 7%. It is expected that the number of European markets will be increasing in the next three years.

### 3. The Americas

In general, the Americas market had a significant increase from 0,15% to 3%. However, market share decreased from 2,07% to only 1,90%. The remark change was from USA with the percentage of increase 3%.



**Table 7: Tourist Arrivals to Laos by Month in 2015**

Country of Origin	2015												Total
	Jan	Feb	Mar	Apr	May	Jun	Jul	Aug	Sep	Oct	Nov	Dec	
<b>Grand Total</b>	<b>436,358</b>	<b>426,697</b>	<b>421,841</b>	<b>416,628</b>	<b>325,095</b>	<b>298,970</b>	<b>337,805</b>	<b>358,358</b>	<b>461,921</b>	<b>400,054</b>	<b>420,650</b>	<b>380,052</b>	<b>4,684,429</b>
<b>Asia and Pacific</b>	<b>402,523</b>	<b>391,175</b>	<b>393,539</b>	<b>390,603</b>	<b>304,365</b>	<b>278,676</b>	<b>316,367</b>	<b>338,175</b>	<b>441,191</b>	<b>374,937</b>	<b>388,855</b>	<b>347,074</b>	<b>4,367,480</b>
ASEAN	<b>334,873</b>	<b>292,398</b>	<b>318,826</b>	<b>326,474</b>	<b>250,489</b>	<b>226,582</b>	<b>259,460</b>	<b>272,354</b>	<b>383,125</b>	<b>314,555</b>	<b>324,871</b>	<b>284,531</b>	<b>3,588,538</b>
Brunei	56	36	36	66	56	51	77	117	133	100	66	71	865
Cambodia	1,073	1,148	1,712	1,325	1,821	1,880	1,137	1,383	1,125	2,019	1,469	4,533	20,625
Indonesia	414	378	1,766	443	424	385	368	367	331	328	382	433	6,019
Malaysia	2,275	1,583	1,909	1,957	1,991	1,969	1,661	1,669	1,962	1,977	2,486	2,656	24,095
Myanmar	194	198	229	245	195	218	195	234	224	260	230	239	2,661
Philippines	3,380	1,249	1,081	1,433	1,151	514	1,201	1,294	1,377	1,398	1,347	1,284	16,709
Singapore	750	707	762	629	721	761	639	606	538	652	636	857	8,258
Thailand	233,633	197,445	206,628	210,569	145,200	130,591	166,625	177,886	201,777	229,999	216,512	204,487	2,321,352
Vietnam	93,098	89,654	104,703	109,807	98,930	90,213	87,557	88,798	175,658	77,822	101,743	69,971	1,187,954
<b>Non-ASEAN</b>	<b>67,650</b>	<b>98,777</b>	<b>74,713</b>	<b>64,129</b>	<b>53,876</b>	<b>52,094</b>	<b>56,907</b>	<b>65,821</b>	<b>58,066</b>	<b>60,382</b>	<b>63,984</b>	<b>62,543</b>	<b>778,942</b>
Australia	4,420	3,405	2,778	2,743	2,629	2,643	2,347	2,136	2,233	2,627	3,210	3,494	34,665
China	34,526	69,562	53,902	43,702	36,505	35,138	36,364	41,022	34,739	39,592	39,289	47,095	511,436
India	454	548	372	455	472	488	415	423	516	440	426	483	5,492
Japan	4,112	4,044	3,814	3,311	3,045	2,769	2,973	4,140	3,657	3,472	4,522	3,967	43,826
Korea	22,151	19,361	12,762	12,295	9,855	9,670	13,539	16,641	15,598	12,854	14,963	5,639	165,328
New Zealand	591	435	317	381	370	332	353	370	309	351	416	573	4,798
Taiwan	518	551	232	593	468	545	423	589	545	510	602	555	6,131
Others	878	871	536	649	532	509	493	500	469	536	556	737	7,266
<b>Europe</b>	<b>23,846</b>	<b>25,282</b>	<b>19,897</b>	<b>17,488</b>	<b>14,133</b>	<b>13,348</b>	<b>14,616</b>	<b>14,283</b>	<b>14,192</b>	<b>17,501</b>	<b>21,674</b>	<b>21,047</b>	<b>217,307</b>
Austria	508	575	360	430	282	220	230	221	141	255	333	355	3,910
Belgium	662	507	417	417	335	356	445	338	324	437	549	502	5,289
Denmark	741	608	493	412	339	278	273	238	214	291	275	329	4,491
Finland	423	467	326	244	207	199	208	112	125	193	234	275	3,013
France	6,028	6,390	4,698	4,382	3,741	3,200	3,941	4,030	3,519	4,147	5,617	5,458	55,151
Germany	3,473	4,030	3,003	2,332	1,857	1,766	1,693	1,811	2,153	2,700	3,499	3,580	31,897
Greece	78	83	106	142	116	53	38	37	22	35	114	54	878
Italy	848	933	766	498	581	576	690	847	591	807	957	896	8,990
Netherlands	958	1,009	665	591	444	588	752	519	654	714	789	746	8,429
Norway	433	521	467	353	209	188	253	168	178	217	206	306	3,499
Russia	1,159	1,143	1,058	926	780	781	699	835	850	1,310	1,622	1,369	12,532
Spain	496	449	428	324	263	328	439	457	412	388	530	342	4,856
Sweden	930	849	602	466	294	192	250	201	240	340	525	576	5,465
Switzerland	1,429	1,279	888	742	515	503	560	422	507	745	1,062	1,125	9,777
United Kingdom	3,862	4,637	4,046	3,513	3,011	3,039	2,987	3,023	3,066	3,353	3,532	3,439	41,508
Others	1,818	1,802	1,574	1,716	1,159	1,081	1,158	1,024	1,196	1,569	1,830	1,695	17,622
<b>The Americas</b>	<b>8,809</b>	<b>9,248</b>	<b>7,563</b>	<b>7,653</b>	<b>5,994</b>	<b>6,279</b>	<b>6,078</b>	<b>5,229</b>	<b>5,645</b>	<b>6,670</b>	<b>8,993</b>	<b>10,826</b>	<b>88,987</b>
Canada	1,894	2,659	2,122	1,718	1,473	1,342	1,120	958	1,140	1,411	1,830	2,118	19,785
USA	6,295	5,847	4,933	5,445	4,238	4,567	4,543	3,850	4,156	4,489	6,616	8,079	63,058
Others	620	742	508	490	283	370	415	421	349	770	547	629	6,144
<b>Africa and Middle East</b>	<b>1,180</b>	<b>992</b>	<b>842</b>	<b>884</b>	<b>603</b>	<b>667</b>	<b>744</b>	<b>671</b>	<b>893</b>	<b>946</b>	<b>1,128</b>	<b>1,105</b>	<b>10,655</b>
Israel	686	544	381	410	240	242	255	261	305	221	342	276	4,163
Others	494	448	461	474	363	425	489	410	588	725	786	829	6,492





**Table 8: Tourist Arrivals by Month through Category, 2012-2015**

Months	2012	2013	2014	2015			% Δ 15/14
				International	Regional	Total	
<b>Grand Total</b>	<b>1,736,787</b>	<b>3,779,490</b>	<b>4,158,719</b>	<b>643,062</b>	<b>4,041,367</b>	<b>4,684,429</b>	<b>12.64</b>
January	298,227	345,411	367,980	74,028	362,330	436,358	18.58
February	283,945	349,459	384,664	68,888	357,809	426,697	10.93
March	285,583	308,709	360,675	54,896	366,945	421,841	16.96
April	314,494	331,717	366,610	51,225	365,403	416,628	13.64
May	287,100	296,938	339,580	42,639	282,456	325,095	-4.27
June	267,306	273,152	232,400	41,148	257,822	298,970	28.64
July	213,953	297,239	316,631	46,122	291,683	337,805	6.69
August	238,725	308,065	304,725	49,269	309,089	358,358	17.60
September	228,186	282,174	368,666	48,622	413,299	461,921	25.30
October	275,948	326,479	382,064	50,622	349,432	400,054	4.71
November	347,212	331,423	365,824	61,637	359,013	420,650	14.99
December	289,393	328,724	368,900	53,966	326,086	380,052	3.02

**Table 9: Arrivals of non – resident visitors at national borders, by month**

Months	2012	2013	2014	2015
<b>Grand Total</b>	<b>3,330,072</b>	<b>3,779,490</b>	<b>4,158,719</b>	<b>4,684,429</b>
<b>1st QUARTER</b>	<b>867,755</b>	<b>1,003,579</b>	<b>1,113,319</b>	<b>1,284,896</b>
January	298,227	345,411	367,980	436,358
February	283,945	349,459	384,664	426,697
March	285,583	308,709	360,675	421,841
<b>2nd QUARTER</b>	<b>868,900</b>	<b>901,807</b>	<b>938,590</b>	<b>1,040,693</b>
April	314,494	331,717	366,610	416,628
May	287,100	296,938	339,580	325,095
June	267,306	273,152	232,400	298,970
<b>3rd QUARTER</b>	<b>680,864</b>	<b>887,478</b>	<b>990,022</b>	<b>1,158,084</b>
July	213,953	297,239	316,631	337,805
August	238,725	308,065	304,725	358,358
September	228,186	282,174	368,666	461,921
<b>4th QUARTER</b>	<b>912,553</b>	<b>986,626</b>	<b>1,116,788</b>	<b>1,200,756</b>
October	275,948	326,479	382,064	400,054
November	347,212	331,423	365,824	420,650
December	289,393	328,724	368,900	380,052



**Table 10: Top Ten Generating Markets, 2012-2015**

Note: Table ranks country by tourist expenditures, not total arrivals.

Rank	2012	Number	% Δ	2013	Number	% Δ
1	Thailand	1,937,612	58	Thailand	2,059,434	54
2	Vietnam	705,596	21	Vietnam	910,164	24
3	Korea	53,829	2	Korea	81,799	2
4	USA	53,380	2	USA	61,608	2
5	France	46,903	1	France	52,411	1
6	Japan	42,026	1	Japan	48,644	1
7	UK	35,694	1	China	245,033	6
8	Australia	33,878	1	UK	41,741	1
9	Germany	23,417	1	Australia	35,450	1
10	China	199,857	6	Germany	29,250	1
	Other	197,880	6	Other	213,956	6

Rank	2014	Number	% Δ	2015	Number	% Δ
1	Thailand	2,043,761	49	Thailand	2,321,352	50
2	Vietnam	1,108,332	27	Vietnam	1,187,954	25
3	Korea	96,085	2	Korea	165,328	4
4	USA	61,460	1	China	511,436	11
5	France	52,146	1	USA	63,058	1
6	Australia	44,964	1	France	55,151	1
7	Japan	44,877	1	Japan	43,826	1
8	UK	39,061	1	UK	41,508	1
9	Germany	29,800	1	Australia	34,665	1
10	China	422,440	10	Germany	31,897	1
	Other	215,793	5	Other	228,254	5

**Table 11: Number of Domestic Tourists, 2013-2015**

Province	Number of Domestic Tourists		
	2013	2014	2015
Attapeu	14,032	16,811	45,408
Bokeo	24,237	25,463	34,089
Bolikhamxay	54,102	55,885	58,957
Champasak	254,971	318,760	379,375
Houaphanh	14,669	11,160	13,525
Khammouane	154,851	159,232	160,882
Luang Prabang	125,354	152,328	161,712
Luang Namtha	192,388	119,300	170,506
Oudomxay	74,143	85,190	88,383
Phongsaly	79,497	79,554	75,416
Saravanh	56,950	64,486	64,100
Savannakhet	459,673	426,246	448,411
Sekong	6,115	11,369	15,595
Vientiane Capital	303,980	300,878	136,222
Vientiane Province	126,976	136,088	345,772
Xaisomboun	N/A	20,144	17,192
Xaiyabouli	78,492	85,598	86,150
Xieng Khouang	7,212	9,226	11,644
<b>Total</b>	<b>2,027,642</b>	<b>2,077,718</b>	<b>2,313,339</b>



**Table 12: Tourist Arrivals to Laos by Port of Entry in 2015**

Country of Origin	Port of Entry											
	Attapeu	Bok	Boli		Cham		Huaphanh		Khammoune		LPB	
	Phou Keua	Houei Xay	Pakxan	Namphao	Vang Tao	Pakse Airport	Nong Nok Khian	Nam Souy	Mittha phab Bridge III	Thakhek	Naphao	Luang prabang Airport
<b>Grand Total</b>	<b>194,140</b>	<b>188,939</b>	<b>28,123</b>	<b>245,793</b>	<b>245,400</b>	<b>6,865</b>	<b>24,579</b>	<b>16,171</b>	<b>121,961</b>	<b>46,709</b>	<b>175,348</b>	<b>122,585</b>
<b>Asia and Pacific</b>	<b>193,449</b>	<b>144,330</b>	<b>28,051</b>	<b>242,286</b>	<b>239,616</b>	<b>2,954</b>	<b>19,138</b>	<b>15,650</b>	<b>118,124</b>	<b>46,709</b>	<b>175,286</b>	<b>53,201</b>
ASEAN	191,982	73,380	27,940	240,351	235,892	1,222	16,817	15,408	116,051	46,709	175,063	16,722
Brunei	-	214	-	-	-	17	9	-	1	-	-	49
Cambodia	21	260	30	33	325	82	10,033	-	194	-	-	119
Indonesia	8	133	-	55	32	61	35	-	120	-	-	192
Malaysia	21	1,427	99	85	315	35	93	3	586	-	-	160
Myanmar	-	134	2	8	13	22	4	-	32	-	-	67
Philippines	9	392	46	100	176	69	82	1	162	-	1	145
Singapore	11	349	4	31	175	26	73	3	75	-	-	317
Thailand	1,410	64,502	25,475	2,666	230,796	176	242	28	85,747	46,709	5,616	13,710
Vietnam	190,502	5,969	2,284	237,373	4,060	734	6,246	15,373	29,134	-	169,446	1,963
<b>Non-ASEAN</b>	<b>1,467</b>	<b>70,950</b>	<b>111</b>	<b>1,935</b>	<b>3,724</b>	<b>1,732</b>	<b>2,321</b>	<b>242</b>	<b>2,073</b>	<b>-</b>	<b>223</b>	<b>36,479</b>
Australia	64	3,091	5	173	478	511	424	19	353	-	-	8,539
China	1,016	59,172	20	570	310	300	833	166	645	-	161	11,410
India	158	83	-	61	141	85	75	1	175	-	24	123
Japan	37	1,629	74	295	936	276	287	19	641	-	38	5,447
Korea	149	4,895	7	654	1,601	293	296	9	148	-	-	6,926
New Zealand	12	971	2	74	90	108	94	12	14	-	-	485
Taiwan	29	385	1	49	72	62	105	14	96	-	-	477
Others	2	724	2	59	96	97	207	2	1	-	-	3,072
<b>Europe</b>	<b>569</b>	<b>36,224</b>	<b>59</b>	<b>2,833</b>	<b>4,534</b>	<b>2,794</b>	<b>4,502</b>	<b>421</b>	<b>2,577</b>	<b>-</b>	<b>51</b>	<b>45,058</b>
Austria	9	653	1	61	100	70	158	6	35	-	-	956
Belgium	14	1,039	3	31	168	107	239	7	75	-	-	484
Denmark	4	788	-	52	151	140	265	4	34	-	2	512
Finland	1	282	-	45	122	56	115	10	31	-	14	378
France	168	6,401	31	359	1,582	851	1,197	68	1,064	-	-	10,480
Germany	93	6,002	4	355	698	431	885	101	425	-	24	9,952
Greece	-	68	-	4	12	8	1	6	36	-	-	99
Italy	15	1,486	-	62	184	256	190	13	48	-	-	2,852
Netherlands	5	3,208	-	143	41	42	45	31	126	-	2	862
Norway	6	419	-	31	93	18	65	5	39	-	-	592
Russia	91	502	2	120	104	18	45	22	39	-	-	2,544
Spain	6	1,478	-	70	66	60	182	20	38	-	9	629
Sweden	18	909	-	96	113	35	124	6	76	-	-	525
Switzerland	27	2,539	12	140	325	224	134	11	173	-	-	597
United Kingdom	46	7,020	4	984	543	285	528	84	319	-	-	10,853
Others	66	3,430	2	280	232	193	329	27	19	-	-	2,743
<b>The Americas</b>	<b>100</b>	<b>7,077</b>	<b>9</b>	<b>597</b>	<b>1,145</b>	<b>1,033</b>	<b>683</b>	<b>89</b>	<b>1,145</b>	<b>-</b>	<b>11</b>	<b>21,614</b>
Canada	21	1,769	1	205	234	254	180	32	218	-	3	7,083
USA	77	4,571	7	278	828	678	420	53	913	-	8	11,657
Others	2	737	1	114	83	101	83	4	14	-	-	2,874
<b>Africa and Middle East</b>	<b>22</b>	<b>1,308</b>	<b>4</b>	<b>77</b>	<b>105</b>	<b>84</b>	<b>256</b>	<b>11</b>	<b>115</b>	<b>-</b>	<b>-</b>	<b>2,712</b>
Israel	14	895	-	61	26	25	117	5	4	-	-	766
Others	8	413	4	16	79	59	139	6	111	-	-	1,946



Port of Entry														Total
LNT	PSL		Savannakhet			Vientiane			Xayabouli			XK		
Boten	Lam Tuai	Pang Hok	Mittha phab Bridge II	Dane Savanh	Savanh Airport	Mittha phab Bridge I	Thanaleng Railway Station	Wattay Airport	Nam Heuang Bridge	Nam Ngeun	Phou dou	Nam Kanh	2015	
373,026	3,067	20,387	787,506	328,880	3,487	1,222,595	3,902	387,586	44,980	50,952	7,261	34,187	4,684,429	
370,901	3,067	16,088	779,402	326,135	2,453	1,142,282	3,430	312,042	43,851	49,647	7,249	32,139	4,367,480	
23,625	-	15,521	775,178	324,160	1,506	1,080,095	1,781	78,768	43,122	48,717	7,226	31,302	3,588,538	
-	-	16	-	-	2	294	1	262	-	-	-	-	865	
31	-	20	599	40	25	3,040	18	5,658	68	28	-	1	20,625	
19	-	17	84	44	60	3,292	73	1,748	10	17	-	19	6,019	
1,281	-	37	777	324	119	6,303	91	12,120	100	91	-	28	24,095	
80	-	4	58	13	14	1,295	7	839	20	47	-	2	2,661	
9	-	15	632	93	56	9,870	197	4,474	78	59	-	43	16,709	
105	-	15	272	72	36	1,846	97	4,698	20	16	-	17	8,258	
22,018	-	422	738,091	31,749	1,036	925,043	1,241	26,722	42,478	48,157	7,210	108	2,321,352	
82	-	14,975	34,665	291,825	158	129,112	56	22,247	348	302	16	31,084	1,187,954	
347,276	3,067	567	4,224	1,975	947	62,187	1,649	233,274	729	930	23	837	778,942	
113	-	147	750	312	282	7,252	20	11,893	56	83	-	100	34,665	
346,188	3,067	128	575	573	166	10,777	35	74,453	293	438	4	136	511,436	
3	-	26	238	22	138	1,035	31	2,976	24	58	-	15	5,492	
314	-	106	1,671	514	218	12,937	549	17,509	94	106	-	129	43,826	
432	-	85	502	365	48	27,209	891	120,041	216	168	16	377	165,328	
23	-	58	188	39	49	961	81	1,477	11	17	-	32	4,798	
166	-	17	117	71	17	998	1	3,355	20	38	3	38	6,131	
37	-	-	183	79	29	1,018	41	1,570	15	22	-	10	7,266	
1,405	-	3,165	5,773	2,130	637	54,438	427	46,419	738	862	12	1,679	217,307	
46	-	143	86	151	5	563	5	709	65	65	-	23	3,910	
40	-	160	138	54	35	1,366	24	1,221	19	31	-	34	5,289	
30	-	124	219	65	15	1,092	-	891	23	21	-	59	4,491	
20	-	55	218	98	45	857	22	555	20	36	-	33	3,013	
317	-	650	1,258	357	138	14,875	95	14,689	159	167	-	245	55,151	
245	-	440	637	278	61	4,470	39	6,133	152	171	-	301	31,897	
27	-	19	77	46	10	144	-	93	5	5	-	218	878	
52	-	191	137	63	20	1,598	3	1,708	20	28	-	64	8,990	
63	-	163	188	57	24	1,810	4	1,458	36	40	-	81	8,429	
20	-	38	246	44	14	940	-	895	7	8	-	19	3,499	
128	-	124	202	127	41	7,278	101	975	18	21	-	30	12,532	
56	-	237	131	43	19	878	1	899	8	5	-	21	4,856	
41	-	137	263	63	21	1,895	18	1,019	16	18	-	72	5,465	
109	-	96	356	101	56	2,572	79	2,138	36	41	11	-	9,777	
179	-	332	1,160	375	85	8,881	19	9,295	127	152	1	236	41,508	
32	-	256	457	208	48	5,219	17	3,741	27	53	-	243	17,622	
606	-	706	2,175	556	371	23,346	44	26,560	380	435	-	305	88,987	
123	-	341	414	157	58	3,832	10	4,447	112	202	-	89	19,785	
476	-	208	1,714	351	305	18,714	31	21,084	266	227	-	192	63,058	
7	-	157	47	48	8	800	3	1,029	2	6	-	24	6,144	
114	-	428	156	59	26	2,529	1	2,565	11	8	-	64	10,655	
73	-	227	48	26	6	1,024	-	777	6	2	-	61	4,163	
41	-	201	108	33	20	1,505	1	1,788	5	6	-	3	6,492	



**Table 13: Tourist Arrivals by Port of Entry through Category, 2011-2015**

Port of Entry	2011	2012	2013	2014	2015	Regional Visitors	Percent Share	Percent Change
<b>Grand Total</b>	<b>2,723,654</b>	<b>3,330,072</b>	<b>3,779,490</b>	<b>4,158,719</b>	<b>4,684,429</b>	<b>3,525,315</b>	<b>% Δ 100</b>	<b>% Δ 15/14</b>
Wattay Airport	179,242	223,266	303,601	381,127	387,586	-	8.27	1.69
Savannakhet Airport	3,400	3,213	4,118	5,890	3,487	-	0.07	-40.80
Pakse Airport	9,795	9,789	9,400	6,195	6,865	-	0.15	10.82
Luang Prabang Airport	89,500	103,324	104,469	106,478	122,585	-	2.62	15.13
Friendship Bridge I	743,361	958,284	1,051,560	1,149,706	1,222,595	925,043	26.10	6.34
Thanaleng Railway Station	-	4,233	3,963	3,672	3,902	1,241	0.08	6.26
Boten	137,669	117,908	203,957	278,228	373,026	346,188	7.96	34.07
Houei Xay	138,763	98,491	164,370	141,262	188,939	64,502	4.03	33.75
Friendship Bridge II	752,825	816,768	824,670	797,290	787,506	738,091	16.81	-1.23
Dane Savanh	190,518	225,076	275,931	317,920	328,880	291,825	7.02	3.45
Vang Tao	99,979	150,074	152,842	144,488	245,400	230,796	5.24	69.84
Nong Nok Khian	11,634	21,359	19,018	18,404	24,579	10,033	0.52	33.55
Nam Phao	102,615	110,553	117,408	167,807	245,793	237,373	5.25	46.47
Pakxan	19,111	23,979	18,397	21,642	28,123	25,475	0.60	29.95
Friendship Bridge III	-	74,298	108,898	123,256	121,961	85,747	2.60	-1.05
Thakek	73,840	15,463	27,722	43,147	46,709	46,709	1.00	8.26
Naphao	56,097	75,003	135,644	153,466	175,348	169,446	3.74	14.26
Nam Heuang Friendship Bridge	14,193	48,041	35,961	48,604	44,980	42,478	0.96	-7.46
Nam Ngeun	15,675	62,511	51,785	46,970	50,952	48,157	1.09	8.48
Phou dou	-	-	-	-	7,261	7,210	0.16	-
Nam Kanh	11,815	17,352	26,787	34,524	34,187	31,084	0.73	-0.98
Nam Souy	9,090	13,370	15,547	14,733	16,171	15,373	0.35	9.76
Pang Hok	10,762	14,632	20,968	18,744	20,387	14,975	0.44	8.77
Larn Tuai	-	-	-	-	3,067	3,067	0.07	-
Phoukeua	53,770	83,084	102,474	135,166	194,140	190,502	4.14	43.63

**Table 14: Visitors by Province, 2008-2015**

Province	2008	2009	2010	2011	2012	2013	2014	2015
Attapeu	27,728	32,718	54,016	70,807	95,372	113,151	153,846	160,212
Bokeo	145,567	140,414	170,579	184,864	132,343	207,786	168,696	260,123
Bolikhamxay	84,401	140,736	138,513	140,517	140,517	139,031	184,658	279,605
Champasak	220,214	278,054	301,669	393,921	470,714	493,180	535,413	611,244
Houaphanh	8,848	15,098	22,116	25,171	29,830	32,315	27,848	34,493
Khammouane	177,097	170,579	174,705	251,324	282,266	427,918	472,906	519,451
Luang Prabang	231,575	237,683	210,783	274,506	294,213	342,661	378,999	531,327
Luang Namtha	197,202	244,614	245,639	184,451	274,100	305,608	380,473	543,542
Oudomxay	101,761	107,419	113,826	133,629	142,308	172,731	102,050	215,448
Phongsaly	41,378	36,752	46,838	47,033	48,568	57,143	69,836	82,103
Saravanh	26,802	28,142	33,619	21,985	61,200	69,524	78,534	86,420
Savannakhet	474,826	791,924	918,683	1,124,905	1,151,122	1,167,154	1,078,334	1,120,021
Sekong	13,125	19,000	21,356	21,465	22,362	25,175	26,509	30,382
Vientiane Capital	878,507	807,445	995,150	1,154,501	1,290,031	1,445,345	1,630,516	1,737,979
Vientiane Province	268,891	290,015	353,874	469,978	494,370	445,636	504,049	561,855
Xaisomboun	N/A	N/A	N/A	N/A	N/A	N/A	22,259	22,137
Xaiyabouli	23,043	23,061	74,132	33,077	63,160	87,776	96,131	99,928
Xieng Khouang	22,729	21,346	21,631	22,525	31,884	35,568	52,434	51,660
<b>Total</b>	<b>2,943,694</b>	<b>3,385,000</b>	<b>3,897,129</b>	<b>4,554,659</b>	<b>5,024,360</b>	<b>5,567,702</b>	<b>5,963,491</b>	<b>6,947,930</b>



**Table 15: Out-going Lao Travelers, 2013-2015**

Border Check Point	Total	Total	2015					Total
	2013	2014	Official	Visit	Travel	Business	Other	2015
<b>Total</b>	<b>2,857,345</b>	<b>3,319,702</b>	<b>40,802</b>	<b>1,831,417</b>	<b>1,026,046</b>	<b>121,599</b>	<b>46,661</b>	<b>3,066,525</b>
<b>Friendship bridge I</b>	<b>1,332,676</b>	<b>1,457,985</b>	<b>13,265</b>	<b>1,452,393</b>	<b>18,922</b>	<b>298</b>	<b>4,952</b>	<b>1,489,830</b>
Border Pass	615,954	772,732	6,366	721,711	6,819	45	1,537	736,478
Passport	716,722	685,253	6,899	730,682	12,103	253	3,415	753,352
<b>Luangnamtha</b>	<b>223,741</b>	<b>129,883</b>	<b>238</b>	<b>906</b>	<b>77,589</b>	<b>77,333</b>	<b>6,923</b>	<b>162,989</b>
Border Pass	150,927	96,566	33	899	76,578	76,373	5,800	159,683
Passport	72,814	33,317	205	7	1,011	960	1,123	3,306
<b>Bolikhamsay</b>	<b>71,540</b>	<b>93,157</b>	<b>607</b>	<b>781</b>	<b>100,315</b>	<b>340</b>	<b>-</b>	<b>102,043</b>
Border Pass	30,349	33,940	17	751	42,261	306	-	43,335
Passport	41,191	59,217	590	30	58,054	34	-	58,708
<b>Khammouane</b>	<b>459,345</b>	<b>438,942</b>	<b>668</b>	<b>140,087</b>	<b>349,560</b>	<b>3,211</b>	<b>1,699</b>	<b>495,225</b>
Border Pass	235,497	147,912	301	61,929	176,849	1,076	1,056	241,211
Passport	223,848	291,030	367	78,158	172,711	2,135	643	254,014
<b>Savannakhet</b>	<b>368,805</b>	<b>846,053</b>	<b>658</b>	<b>18,659</b>	<b>324,448</b>	<b>545</b>	<b>3,622</b>	<b>347,932</b>
Border Pass	215,689	381,286	248	1,150	195,392	343	2,511	199,644
Passport	153,116	464,767	410	17,509	129,056	202	1,111	148,288
<b>Wattay Airport</b>	<b>72,575</b>	<b>76,985</b>	<b>19,749</b>	<b>57,709</b>	<b>3,198</b>	<b>90</b>	<b>318</b>	<b>81,064</b>
Border Pass	-	-	-	-	-	-	-	-
Passport	72,575	76,985	19,749	57,709	3,198	90	318	81,064
<b>Bokeo</b>	<b>47,189</b>	<b>26,558</b>	<b>44</b>	<b>955</b>	<b>32,036</b>	<b>1,021</b>	<b>520</b>	<b>34,576</b>
Border Pass	22,844	12,095	-	952	14,237	932	518	16,639
Passport	24,345	14,463	44	3	17,799	89	2	17,937
<b>Champasak</b>	<b>118,425</b>	<b>107,131</b>	<b>1,040</b>	<b>39,300</b>	<b>106,774</b>	<b>8,900</b>	<b>1,055</b>	<b>157,069</b>
Border Pass	35,829	27,801	81	15,302	45,200	7,326	712	68,621
Passport	82,596	79,330	959	23,998	61,574	1,574	343	88,448
<b>Xayabouli</b>	<b>140,987</b>	<b>121,991</b>	<b>116</b>	<b>116,074</b>	<b>-</b>	<b>27,297</b>	<b>26,666</b>	<b>170,153</b>
Border Pass	87,089	65,129	-	36,778	-	25,970	24,666	87,414
Passport	53,898	56,862	116	79,296	-	1,327	2,000	82,739
<b>Huaphanh</b>	<b>7,519</b>	<b>3,737</b>	<b>1,868</b>	<b>-</b>	<b>1,526</b>	<b>532</b>	<b>31</b>	<b>3,957</b>
Border Pass	5,968	1,834	159	-	899	496	31	1,585
Passport	1,551	1,903	1,709	-	627	36	-	2,372
<b>Luangprabang</b>	<b>2,708</b>	<b>1,960</b>	<b>116</b>	<b>1,790</b>	<b>92</b>	<b>-</b>	<b>-</b>	<b>1,998</b>
Border Pass	-	-	-	-	-	-	-	-
Passport	2,708	1,960	116	1,790	92	-	-	1,998
<b>Xiengkhouang</b>	<b>4,903</b>	<b>11,687</b>	<b>254</b>	<b>2,126</b>	<b>4,258</b>	<b>1,587</b>	<b>-</b>	<b>8,225</b>
Border Pass	2,677	6,721	150	1,068	1,942	1,447	-	4,607
Passport	2,226	4,966	104	1,058	2,316	140	-	3,618
<b>Attapeu</b>	<b>4,391</b>	<b>1,727</b>	<b>2,179</b>	<b>637</b>	<b>3,361</b>	<b>445</b>	<b>875</b>	<b>7,497</b>
Border Pass	1,459	367	733	177	423	6	-	1,339
Passport	2,932	1,360	1,446	460	2,938	439	875	6,158
<b>Phongsaly</b>	<b>2,541</b>	<b>1,906</b>	<b>-</b>	<b>-</b>	<b>3,967</b>	<b>-</b>	<b>-</b>	<b>3,967</b>
Border Pass	1,529	960	-	-	1,959	-	-	1,959
Passport	1,012	946	-	-	2,008	-	-	2,008



**Table 16: Room Occupancy Rates by Province, 2008– 2015**

Province	Occupancy Rate							
	2008	2009	2010	2011	2012	2013	2014	2015
Attapeu	48%	45%	48%	44%	46%	49%	43%	52%
Bokeo	63%	54%	56%	62%	63%	65%	44%	56%
Bolikhamxay	69%	54%	57%	55%	52%	46%	42%	45%
Champassak	65%	62%	63%	68%	62%	60%	55%	56%
Houaphanh	40%	49%	50%	55%	54%	48%	45%	51%
Khammouane	58%	49%	52%	50%	51%	71%	75%	71%
Luang Namtha	60%	48%	55%	56%	54%	49%	57%	56%
Luang Prabang	73%	68%	63%	68%	69%	70%	71%	73%
Oudomxay	60%	55%	58%	55%	58%	53%	50%	56%
Phongsaly	52%	51%	60%	55%	56%	44%	40%	46%
Saravanh	42%	51%	50%	56%	57%	52%	48%	53%
Savannakhet	65%	67%	68%	60%	58%	58%	69%	71%
Sekong	46%	40%	49%	53%	51%	41%	55%	48%
Vientiane Capital	60%	63%	65%	63%	67%	72%	73%	74%
Vientiane province	64%	61%	60%	64%	62%	63%	60%	65%
Xaisomboun	N/A	N/A	N/A	N/A	N/A	N/A	49%	48%
Xayabouli	50%	48%	52%	57%	53%	43%	41%	47%
Xieng Khouang	50%	51%	54%	56%	58%	57%	54%	56%
<b>Average</b>	<b>54%</b>	<b>57%</b>	<b>54%</b>	<b>56%</b>	<b>57%</b>	<b>55%</b>	<b>54%</b>	<b>57%</b>

**Table 17: Number of Hotels, Guesthouses, Resorts, Restaurants and Entertainment Establishments, 2014-2015**

Province	Type								Total 2014	Total 2015
	Hotel		GH, Resort		Restaurant		Entertainment			
	2014	2015	2014	2015	2014	2015	2014	2015		
Attapeu	12	12	38	46	29	29	8	8	87	95
Bokeo	12	11	62	66	55	55	1	1	130	133
Bolikhamxay	30	32	78	81	95	98	9	9	212	220
Champasack	64	62	177	170	33	33	9	10	283	275
Houaphanh	8	8	53	58	72	138	4	2	137	206
Khammouane	19	21	92	106	91	128	4	2	206	257
Luang Namtha	7	8	87	89	101	101	11	11	206	209
Luang Prabang	58	61	254	238	72	289	3	3	387	591
Oudomxay	17	19	72	71	77	77	3	3	169	170
Phongsaly	7	8	47	49	66	66	10	10	130	133
Saravanh	4	4	46	42	27	27	3	3	80	76
Savannakhet	38	42	151	154	69	71	10	7	268	274
Sekong	9	11	29	29	17	17	8	8	63	65
Vientiane Capital	199	208	231	219	95	99	39	39	564	565
Vientiane Province	13	18	272	247	208	239	26	26	519	530
Xaisomboun	1	1	35	37	55	62			91	100
Xaiyabouli	4	4	102	109	49	63	10	16	165	192
Xieng Khouang	13	12	85	96	58	72	6	6	162	186
<b>Total</b>	<b>515</b>	<b>542</b>	<b>1,911</b>	<b>1,907</b>	<b>1,269</b>	<b>1,664</b>	<b>164</b>	<b>164</b>	<b>3,859</b>	<b>4,277</b>





**Table 18: Number of Accommodation Establishments, and Rooms 2009-2015**

Province	Number of Establishments							Number of Rooms						
	2009	2010	2011	2012	2013	2014	2015	2009	2010	2011	2012	2013	2014	2015
Attapeu	19	18	28	31	42	50	58	319	319	484	521	609	760	703
Bokeo	40	44	49	50	66	74	77	483	535	630	654	853	1,049	1,084
Bolikhamxay	43	44	56	56	105	108	113	720	742	955	1,509	1,665	2,011	2,160
Champasack	176	188	203	215	225	241	232	2,669	2,958	3,250	3,215	4,072	4,260	3,602
Houaphanh	50	49	49	49	59	61	66	473	486	486	486	730	691	827
Khammouane	58	81	85	90	91	111	127	992	1,287	1,230	1,321	1,119	1,726	2,798
Luang Namtha	77	79	77	75	82	94	97	939	945	1,086	1,001	1,269	1,349	1,384
Luang Prabang	242	253	279	296	380	312	299	2,703	2,894	3,241	3,529	4,126	5,634	5,005
Oudomxay	64	78	77	77	82	89	90	817	1,196	1,124	1,124	1,396	1,598	1,619
Phongsaly	43	44	44	46	49	54	57	365	412	381	444	506	571	624
Saravane	23	32	32	33	51	50	46	299	420	420	504	555	441	373
Savannakhet	115	126	142	175	180	189	196	2,302	2,415	2,702	3,690	1,662	4,268	4,351
Sekong	18	26	15	15	38	38	40	225	280	242	242	609	540	456
Vientiane Capital	362	378	392	398	423	430	427	7,972	9,496	10,948	11,416	11,497	11,923	12,028
Vientiane Province	222	256	272	288	275	285	265	3,314	3,737	4,081	4,369	4,395	4,952	8,153
Xaisomboun	N/A	N/A	N/A	N/A	N/A	36	38	N/A	N/A	N/A	N/A	N/A	152	337
Xaiyabouli	87	97	97	107	114	106	113	974	1,062	1,208	1,340	1,437	1,384	1,388
Xieng Khouang	62	77	29	29	97	98	108	992	1,100	492	492	1,308	1,405	1,494
<b>Total</b>	<b>1,701</b>	<b>1,870</b>	<b>1,926</b>	<b>2,030</b>	<b>2,359</b>	<b>2,426</b>	<b>2,449</b>	<b>26,558</b>	<b>30,284</b>	<b>32,960</b>	<b>35,857</b>	<b>37,808</b>	<b>44,714</b>	<b>48,386</b>

**Table 19: Number of Hotels, Guest Houses, Rooms and Beds, in 2015**

Province	Hotels			Guest Houses			Total		
	No	Room	Bed	No	Room	Bed	No	Room	Beds
Attapeu	12	339	515	46	364	464	58	703	979
Bokeo	11	356	526	66	728	899	77	1,084	1,425
Bolikhamxay	32	973	1,384	81	1,187	1,554	113	2,160	2,938
Champasack	62	2,271	3,727	170	1,331	1,507	232	3,602	5,234
Houaphanh	8	165	224	58	662	887	66	827	1,111
Khammouane	21	1,740	1,599	106	1,058	1,294	127	2,798	2,893
Luang Namtha	8	363	564	89	1,021	1,081	97	1,384	1,645
Luang Prabang	61	2,839	3,673	238	2,166	3,218	299	5,005	6,891
Oudomxay	19	792	1,232	71	827	1,141	90	1,619	2,373
Phongsaly	8	205	294	49	419	607	57	624	901
Saravane	4	84	127	42	289	400	46	373	527
Savannakhet	42	1,956	2,749	154	2,395	2,902	196	4,351	5,651
Sekong	11	288	370	29	168	204	40	456	574
Vientiane Capital	208	7,799	9,861	219	4,229	4,766	427	12,028	14,627
Vientiane Province	18	917	1,338	247	7,236	4,477	265	8,153	5,815
Xaisomboun	1	20	36	37	317	342	38	337	378
Xaiyabouli	4	144	211	109	1,244	1,405	113	1,388	1,616
Xieng Khouang	12	346	537	96	1,148	1,527	108	1,494	2,064
<b>Total</b>	<b>542</b>	<b>21,597</b>	<b>28,967</b>	<b>1,907</b>	<b>26,789</b>	<b>28,675</b>	<b>2,449</b>	<b>48,386</b>	<b>57,642</b>



**Table 20: Visitor Arrivals to LuangPrabang Province**

Country of Origin	2012		2013		2014		2015		% Δ 15/14
	Number	% Δ	Number	% Δ	Number	% Δ	Number	% Δ	
<b>Total</b>	<b>410,855</b>		<b>467,911</b>		<b>531,327</b>		<b>607,584</b>		<b>14.35</b>
<b>Laos</b>	<b>116,642</b>		<b>125,354</b>		<b>152,328</b>		<b>161,712</b>		<b>6.16</b>
<b>Foreigner</b>	<b>294,213</b>	<b>100%</b>	<b>342,557</b>	<b>100%</b>	<b>378,999</b>	<b>100%</b>	<b>445,872</b>	<b>100%</b>	<b>17.64</b>
<b>Asia and Pacific</b>	<b>128,483</b>	<b>54.06</b>	<b>130,879</b>	<b>55.06</b>	<b>163,631</b>	<b>68.84</b>	<b>201,334</b>	<b>84.71</b>	<b>23.04</b>
ASEAN	63,472	26.70	52,371	22.03	65,163	27.42	67,979	28.60	4.32
Brunei	584	0.25	303	0.13	326	0.14	28	0.01	-91.41
Cambodia	532	0.22	377	0.16	563	0.24	618	0.26	9.77
Indonesia	608	0.26	484	0.20	527	0.22	12	0.01	-97.72
Malaysia	1,646	0.69	2,153	0.91	2,241	0.94	36	0.02	-98.39
Myanmar	372	0.16	412	0.17	346	0.15	426	0.18	23.12
Philippines	913	0.38	1,087	0.46	1,326	0.56	121	0.05	-90.87
Singapore	5,205	2.19	2,843	1.20	3,350	1.41	46	0.02	-98.63
Thailand	50,636	21.30	41,725	17.55	52,120	21.93	61,201	25.75	17.42
Vietnam	2,976	1.25	2,987	1.26	4,364	1.84	5,491	2.31	25.82
<b>Non-ASEAN</b>	<b>65,011</b>	<b>27.35</b>	<b>78,508</b>	<b>33.03</b>	<b>98,468</b>	<b>41.43</b>	<b>133,355</b>	<b>56.11</b>	<b>35.43</b>
Australia	13,780	5.80	16,817	7.08	18,482	7.78	19,542	8.22	5.74
China	19,894	8.37	20,802	8.75	36,923	15.53	60,793	25.58	64.65
India	394	0.17	450	0.19	425	0.18	89	0.04	-79.06
Japan	12,716	5.35	15,132	6.37	18,042	7.59	19,149	8.06	6.14
Korea	11,732	4.94	14,683	6.18	17,732	7.46	33,582	14.13	89.39
New Zealand	2,412	1.01	3,919	1.65	3,528	1.48	124	0.05	-96.49
Taiwan	463	0.19	445	0.19	689	0.29	64	0.03	-90.71
Others	3,620	1.52	6,260	2.63	2,647	1.11	12	0.01	-99.55
<b>Europe</b>	<b>119,482</b>	<b>50.27</b>	<b>151,097</b>	<b>63.57</b>	<b>153,226</b>	<b>64.47</b>	<b>171,884</b>	<b>72.32</b>	<b>12.18</b>
Austria	3,573	1.50	4,230	1.78	3,164	1.33	3,738	1.57	18.14
Belgium	1,390	0.58	618	0.26	795	0.33	963	0.41	21.13
Denmark	2,550	1.07	3,150	1.33	3,839	1.62	3,851	1.62	0.31
Finland	1,683	0.71	4,190	1.76	5,382	2.26	5,397	2.27	0.28
France	26,436	11.12	27,766	11.68	28,590	12.03	29,936	12.59	4.71
Germany	19,594	8.24	26,229	11.04	27,094	11.40	28,891	12.16	6.63
Greece	711	0.30	545	0.23	683	0.29	994	0.42	45.53
Italy	5,332	2.24	8,316	3.50	9,640	4.06	12,935	5.44	34.18
Netherlands	3,793	1.60	6,272	2.64	7,336	3.09	8,416	3.54	14.72
Norway	1,337	0.56	3,180	1.34	3,264	1.37	4,316	1.82	32.23
Russia	5,255	2.21	8,090	3.40	10,742	4.52	14,261	6.00	32.76
Spain	2,852	1.20	3,769	1.59	4,247	1.79	6,292	2.65	48.15
Sweden	2,411	1.01	3,280	1.38	3,592	1.51	4,670	1.96	30.01
Switzerland	4,397	1.85	7,051	12.22	7,961	3.35	8,994	3.78	12.98
United Kingdom	22,584	9.50	29,051	2.97	31,649	13.32	32,258	13.57	1.92
Others	15,584	6.56	15,360	6.46	5,248	2.21	5,972	2.51	13.80
<b>The Americas</b>	<b>42,124</b>	<b>17.72</b>	<b>54,143</b>	<b>22.78</b>	<b>55,296</b>	<b>23.26</b>	<b>64,762</b>	<b>27.25</b>	<b>17.12</b>
Canada	11,673	4.91	17,824	7.50	18,648	7.85	20,642	8.68	10.69
USA	22,415	9.43	26,234	11.04	25,859	10.88	27,594	11.61	6.71
Others	8,036	3.38	10,085	4.24	10,789	4.54	16,526	6.95	53.17
<b>Africa and Middle East</b>	<b>4,124</b>	<b>1.74</b>	<b>6,438</b>	<b>2.71</b>	<b>6,846</b>	<b>2.88</b>	<b>7,892</b>	<b>3.32</b>	<b>15.28</b>
Israel	3,566	1.50	4,060	1.71	4,734	1.99	5,198	2.19	9.80
Others	558	0.23	2,378	1.00	2,112	0.89	2,694	1.13	27.56





## Part II: International Visitor Survey

The results in this section of the report relate to information obtained from 2,800 international visitors surveyed during the period April-December 2015 at Wattay International Airport, Friendship Bridge, Luangprabang and Champassack Provinces. The international visitors who were randomly interviewed represent all tourist arrivals to Laos.

**Table 21: Profile of International Tourist Arrivals to Laos, 2010 to 2015**

CHARACTERISTIC	2010	2011	2012	2013	2014	2015
<b>MODE OF ARRIVAL</b>	100%	100%	100%	100%	100%	100%
Air	41	48.8	43	32.4	29.3	28.4
Land	59	51.2	57	67.6	70.7	71.6
<b>SEX</b>	100%	100%	100%	100%	100%	100%
Male	56	52.8	46	49.6	55	54.3
Female	44	47.2	54	50.4	45	45.7
<b>AGE GROUP</b>	100%	100%	100%	100%	100%	100%
15 to 19	3	5.1	2.6	4.7	3.5	1.1
20 to 29	33	41.5	21.8	43.6	35.3	27
30 to 39	35	23.5	23.73	20.7	23.6	26.1
40 to 49	20	9.3	17.36	11.6	12.4	16.3
50 to 59	5	9.3	17.1	11.9	13.1	14.3
60 and above	4	11.3	17.4	7.4	12.1	15.2
<b>OCCUPATION</b>	100%	100%	100%	100%	100%	100%
Government	12	8.1	17.54	13.1	10	10.4
Private company	26	32.8	30.43	35.5	37.2	32.2
Student	25	20.3	10.28	23.6	19.2	19.1
Housewife	6	2	4.3	1.4	2.1	1
Retired	6	8.8	16.56	5.1	8.1	13.8
Self-employed	18	8.2	15.93	7.3	8.4	9.9
Others	7	19.8	4.96	13.9	15	13.6
<b>PURPOSE OF VISIT</b>	100%	100%	100%	100%	100%	100%
Business	8	3.6	2.66	7	4.6	3.5
Holiday	79	83.4	74.9	83.6	89.6	91.1
Visit family	2	10	9.4	5.5	2.1	1.4
Official, convention and seminar	10	1.3	4.83	1.7	1.6	2.4
Others	1	1.7	8.21	2.1	2.1	1.6
<b>TYPE OF ACCOMMODATION</b>	%	%	%	%	%	%
Hotel	50	44.8	58.86	54.5	62.5	66.7
Guest House	74	51.5	34.08	42.5	42.4	41.3
Private house	3	2.1	3.3	1.5	5.5	3.9
Others	2	1.6	3.76	1.6	2.8	2.6
<b>PERSONS ACCOMPANIED WITH</b>	100%	100%	100%	100%	100%	100%
Alone	32	23.7	12.87	26.2	24.2	13.8
Spouse/partner	19	35.8	32.58	32.2	42	42.3
Child	6	2.4	7.7	3.2	5	11.4
Colleague	11	2.5	38.6	2.8	2.1	3.8
Friend	31	31.2	6.8	32.4	25.3	29.4
Others	1	4.4	1.45	3.2	7.9	4.2





## Continue

CHARACTERISTIC	2010	2011	2012	2013	2014	2015
<b>FREQUENCY OF VISIT</b>	100%	100%	100%	100%	100%	100%
None	2	38.3	25.8	41.1	36.7	4
First visit	80	43.8	53.7	40.3	45.7	79.9
Second visit	13	8.2	12.3	6.8	6.8	8.2
Third visit	2	9.7	8.2	11.8	10.8	7.9
<b>SOURCE OF INFORMATION ABOUT LAOS</b>	%	%	%	%	%	%
Book or magazine	31	32.1	30.8	41.1	34	13.8
TV or radio	3	4.7	2.7	4.9	22	12
Friend	63	58.3	45.9	26.3	25.8	23.8
Travel Agency/Tour Operator	11	11.4	8.3	16.2	17.9	16.5
Internet	52	54.3	32.7	30.6	30	63.4
Guide Book	22	21	24	32	23	30
Other	5	14.3	14.1	5.6	4.3	7.5
<b>MAIN INTERESTS</b>	%	%	%	%	%	%
Nature	86	66	53.3	70.4	69.2	66.8
Temple and monuments	62	65.3	41.7	61.7	62.3	69.2
Culture	81	74.4	52	79.4	74.2	74
Minority people	77	28.7	20.4	26.3	24.6	33.9
Food	27	27	22.9	37.4	36.5	48.7
Shopping	28	21.8	9.6	17.3	14.9	15.3
New destination	31	34.9	23.5	39.8	42	34.5
Other	10	14.6	5.5	9.8	13	13.5
<b>PROVINCES VISITED</b>	%	%	%	%	%	%
Attapeu	1	1	1	1.2	1.3	1.7
Bokeo	25	26	23.8	23	21.2	17.5
Bolikhambxay	10	15.9	14.2	13.1	11	9.7
Champassak	51	49.8	46	52.8	56.2	58
Huapanh	7	5.4	5.2	4.5	3.8	3.5
Khammouane	13	22.4	21.1	19.2	18.5	17.4
Luang Namtha	12	20.9	18.2	19.7	18.2	14.8
Luang Prabang	73	65.3	61	78.9	81	82.8
Oudomsay	10	5	4.4	3.6	3.1	3.6
Phong Saly	3	4.8	4.1	3.9	3.3	3
Saravanh	2	3.4	3.1	2.5	2.2	2.7
Savannakhet	5	8.7	6.2	9.4	8.4	9.1
Sekong	1	1	1	2.4	1.4	1.1
Vientiane Capital	79	67.2	53	78.5	72.9	75.9
Vientiane Province	48	36.1	31.1	39.4	36.9	33.1
Xaisomboun	0	0	0	0	1.3	0
Xaiyabouli	2	4.5	4.1	5.2	6	5.2
Xieng Khouang	30	25.9	22.4	20	16	10.5
<b>COUNTRIES VISITED ON THESE TRIPS</b>	%	%	%	%	%	%
Only Lao PDR	28	25.7	29.6	22.6	24.2	37.4
Thailand	75	76.2	43.2	60.1	52.2	52.5
Cambodia or China or Vietnam	45	47.5	36.7	52.6	54.7	62
Other Southeast Asian countries	23	40.1	31.1	17.7	17.6	16
<b>AVERAGE LENGTH OF STAY (DAYS)</b>	7	7	7.2	8.4	7.9	7.5
<b>AVERAGE EXPENDITURE PER DAY PER PERSON ( US Dollars )</b>	75	72	81	69.5	73.3	76.5





## Part III: Tourism Projections

**Table 22: Tourist Arrivals to Laos, Revenue from Tourism, Average Length of Stay by Time Trend from 1993-2020**

Year	Number of Tourist Arrivals	Revenue from Tourism (Dollars)	Average Length of Stay (Days) for international tourists	Remark
1993	102,946	6,280,000	3.5	
1994	146,155	7,557,600	5.1	
<b>1995</b>	<b>346,460</b>	<b>24,738,480</b>	<b>4.3</b>	
1996	403,000	43,592,263	4.1	
1997	463,200	73,276,904	5.0	
1998	500,200	79,960,145	5.0	
1999	614,278	97,265,324	5.5	
<b>2000</b>	<b>737,208</b>	<b>113,898,285</b>	<b>5.5</b>	
2001	673,823	103,786,323	8.0	
2002	735,662	113,409,883	6.5	
2003	636,361	87,302,412	6.0	
2004	894,806	118,947,707	6.5	
<b>2005</b>	<b>1,095,315</b>	<b>146,770,074</b>	<b>7.0</b>	
2006	1,215,106	173,249,896	7.0	
2007	1,623,943	233,304,695	7.0	
2008	1,736,787	275,515,758	6.5	
2009	2,008,363	267,700,224	7.0	
<b>2010</b>	<b>2,513,028</b>	<b>381,669,031</b>	<b>7.0</b>	
2011	2,723,564	406,184,338	7.0	
2012	3,330,072	506,022,586	7.2	
2013	3,779,490	595,909,127	8.4	
2014	4,158,719	641,636,543	7.9	
<b>2015</b>	<b>4,684,429</b>	<b>725,365,681</b>	<b>7.5</b>	
2016	5,054,080	801,020,000	8.1	Estimated
2017	5,490,004	875,400,000	8.3	Estimated
2018	5,927,010	949,781,000	8.4	Estimated
2019	6,364,100	1,024,161,000	8.6	Estimated
2020	6,801,020	1,098,542,000	8.8	Estimated
2025	9,059,040	1,470,444,000	9.6	Estimated



**Table 23: Tourist Arrivals Forecast by Season from 2005 to 2025**

Year	Jan	Feb	Mar	Apr	May	Jun	Jul	Aug	Sep	Oct	Nov	Dec	Total
2005	77,093	81,766	113,722	100,477	83,665	96,140	67,878	85,940	77,694	99,437	100,217	111,286	1,095,315
2006	111,917	112,520	104,675	99,928	94,017	85,016	79,525	93,045	86,762	108,720	111,747	127,234	1,215,106
2007	150,853	140,238	137,463	117,805	141,771	117,741	121,541	127,687	126,071	152,366	139,478	150,929	1,623,943
2008	158,776	149,744	140,256	142,321	150,314	149,299	133,355	122,636	128,427	134,943	158,673	168,043	1,736,787
2009	186,668	176,596	154,059	101,288	117,754	140,929	161,055	156,239	178,194	191,697	190,132	253,752	2,008,363
2010	229,032	196,746	210,337	224,753	179,168	140,929	182,876	201,273	195,318	220,925	237,692	265,613	2,484,662
2011	265,367	237,554	257,454	221,854	266,080	237,153	244,181	219,440	209,259	182,671	192,683	189,868	2,723,564
2012	298,227	283,945	285,583	314,494	287,100	267,306	213,953	238,725	228,186	275,948	347,212	289,393	3,330,072
2013	345,411	350,459	308,847	331,717	297,038	273,152	297,439	308,065	280,235	326,579	331,823	328,725	3,779,490
2014	367,980	384,664	360,675	366,610	339,580	232,400	316,631	304,725	368,666	382,064	365,824	368,900	4,158,719
2015	436,358	426,697	421,841	416,628	325,095	298,970	337,805	358,358	461,921	400,054	420,650	380,052	4,684,429
2016	423,220	471,815	451,602	473,845	397,946	327,272	374,136	384,244	456,805	438,742	454,282	400,171	5,054,080
2017	455,430	515,467	492,866	524,687	432,724	351,024	402,580	416,312	501,121	477,716	494,102	425,975	5,490,004
2018	487,681	559,418	533,531	569,530	468,703	375,776	432,924	449,529	547,439	517,698	532,922	451,859	5,927,010
2019	519,850	604,570	575,396	618,372	503,282	401,529	464,327	481,732	591,753	555,692	569,800	477,797	6,364,100
2020	553,060	648,821	616,661	666,214	538,061	426,287	494,711	512,942	637,369	594,636	608,662	503,596	6,801,020
2025	719,109	899,079	827,985	914,424	726,954	549,042	647,678	677,994	867,652	789,503	802,669	636,951	9,059,040



**Table 24: Number of Lao Travel Agents from 2009-2015**

Province	Number of Travel Agents							Number of Branch Travel Agents						
	2009	2010	2011	2012	2013	2014	2015	2009	2010	2011	2012	2013	2014	2015
Attapeu	1	1	3	3	3	3	2	0	0	0	0	0	1	0
Bokeo	8	9	12	14	15	15	17	5	5	3	4	4	1	3
Bolikhamxay	2	2	2	2	2	2	1	0	0	0	0	0	5	0
Champasack	18	19	23	22	24	28	29	17	17	16	12	14	0	9
Houaphanh	2	2	2	2	2	2	1	0	0	0	0	0	0	0
Khammouane	2	2	6	4	4	4	3	0	2	2	4	4	4	1
Luang Namtha	4	3	3	5	5	5	5	1	2	3	3	3	28	1
Luang Prabang	24	25	35	39	42	49	57	23	24	25	27	25	0	24
Oudomxay	2	2	2	3	3	3	4	0	0	0	0	0	2	0
Phongsaly	0	0	0	0	0	0	0	0	1	1	1	1	9	1
Saravane	1	1	1	1	1	3	3	1	1	1	1	1	0	0
Savannakhet	6	7	11	12	12	12	10	8	8	4	4	4	4	0
Sekong	1	1	1	2	2	2	0	0	0	0	0	0	10	0
Vientiane Capital	90	109	127	157	162	197	216	8	8	9	9	9	0	9
Vientiane Province	3	2	2	4	6	6	9	0	1	2	2	2	0	2
Xaisomboun	0	0	0	0	0	0	0	0	0	0	0	0	0	0
Xaiyabouli	1	3	5	4	4	5	5	0	0	0	0	0	4	0
Xieng Khouang	1	1	1	1	3	6	6	8	8	8	8	8	0	4
<b>Total</b>	<b>166</b>	<b>189</b>	<b>236</b>	<b>275</b>	<b>290</b>	<b>342</b>	<b>368</b>	<b>71</b>	<b>77</b>	<b>74</b>	<b>75</b>	<b>75</b>	<b>68</b>	<b>54</b>

**Table 25: Number of Tourist Sites in Laos in 2015**

Province	Natural sites	Cultural sites	Historical sites	Total
Attapeu	30	11	10	51
Bokeo	70	23	6	99
Bolikhamxay	70	11	3	84
Champasak	112	60	40	212
Houaphanh	36	28	53	117
Khammouane	141	30	29	200
Luang Namtha	51	14	14	79
Luang Prabang	107	86	34	227
Oudomxay	71	41	7	119
Phongsaly	29	66	3	98
Saravanh	43	32	6	81
Savannakhet	74	24	13	111
Sekong	20	8	4	32
Vientiane Capital	25	17	9	51
Vientiane Province	103	11	5	119
Xaisomboun	29	5	5	39
Xaiyabouli	29	13	6	48
Xieng Khouang	105	54	31	190
<b>Total</b>	<b>1145</b>	<b>534</b>	<b>278</b>	<b>1957</b>





**Table 26: International visitor arrivals by mode of transport and purpose of visit, 2012-2016**

Year	2012	2013	2014	2015
<b>Total</b>	<b>3,330,072</b>	<b>3,779,490</b>	<b>4,158,719</b>	<b>4,684,429</b>
<b>By mode of transport</b>				
By air	339,592	421,588	499,690	520,523
By land	2,990,480	3,357,902	3,659,029	4,163,906
<b>By purpose of visit</b>				
Business	88,580	264,564	191,301	163,955
Holiday	2,494,224	3,159,654	3,726,212	4,267,515
Visit	313,027	207,872	87,333	65,582
Official	160,842	64,251	66,540	112,426
Others	273,399	83,149	87,333	74,951

**Table 27: Revenue from Tourism and Major Exports, 2011-2015**

Note: Revenue in Millions of US Dollars

Product	2015		2014		2013		2012		2011	
	Revenue	Rank	Revenue	Rank	Revenue	Rank	Revenue	Rank	Revenue	Rank
<b>Tourism</b>	<b>725.3</b>	<b>3</b>	<b>641.6</b>	<b>2</b>	<b>595.9</b>	<b>2</b>	<b>514.0</b>	<b>2</b>	<b>406.1</b>	<b>2</b>
Garments	199.3	6	219.5	6	232.7	5	NA		197.4	4
Electricity	495.5	4	586.1	3	592.3	3	254.0	3	341.0	3
Wood Products	144.6	7	159.9	7	83.5	7	72.0	6	43.7	7
Coffee	54.7	8	48.4	8	79.7	8	69.0	7	23.4	8
Agricultural Products	319.8	5	238.2	4	290.1	4	177.0	4	140.0	5
Minerals	1,292.4	1	1,325.2	1	1,982.0	1	1,024.0	1	1,237.2	1
Handicrafts	2.1	9	5.3	9	0.94	9	0.38	8	4.6	9
Other Industries	917.2	2	237.6	5	133.0	6	161.0	5	134.0	6

Source: Ministry of Industry and Commerce, Tourism Development Department.





## Ministry of Information, Culture and Tourism Tourism Development Department

### Head Office:

P.O. Box: 3556  
Lane Xang Avenue  
Vientiane, Lao PDR  
Tel: (856 21) 212 251, 212 769, 217910, 252961.  
Fax: (856 21) 217910.

### Website:

<http://www.tourismlaos.org>  
<http://www.ecotourismlaos.com>  
<http://www.laotourismdevelopment.com>

### Provincial Offices: Country code: 856.

<b>Attapeu</b>	Tel: (036) 211 056	Fax: (036) 211 014
<b>Bokeo</b>	Tel: (084) 211 162	Fax: (084) 211 162
<b>Bolikhamxay</b>	Tel: (054) 212 667	Fax: (054) 212 667
<b>Champasak</b>	Tel: (031) 212 021	Fax: (031) 212 021
<b>Huaphanh</b>	Tel: (064) 312 567	Fax: (064) 312 567
<b>Khammouane</b>	Tel: (051) 212 512	Fax: (051) 212 512
<b>Luang Namtha</b>	Tel: (086) 312 047	Fax: (086) 312 047
<b>Luang Prabang</b>	Tel: (071) 212 487	Fax: (071) 252 904
<b>Oudomxay</b>	Tel: (081) 211 797	Fax: (081) 212 482
<b>Phongsaly</b>	Tel: (088) 210 098	Fax: (088) 210 098
<b>Saravanh</b>	Tel: (034) 211 528	Fax: (034) 211 528
<b>Savannakhet</b>	Tel: (041) 212 755	Fax: (041) 212 755
<b>Sekong</b>	Tel: (038) 211 361	Fax: (038) 211 013
<b>Vientiane Capital</b>	Tel: (021) 222 971	Fax: (021) 212 926
<b>Vientiane Province</b>	Tel: (023) 211 629	Fax: (023) 211 629
<b>Xaysomboun</b>	Tel: (026) 210 030	Fax: (026) 210 030
<b>Xayabouly</b>	Tel: (030) 5180095	Fax: (074) 211 183
<b>Xieng Khouang</b>	Tel: (061) 312 217	Fax: (061) 312 217





## Consultants:

Mr. Sounh MANIVONG	Director General of Tourism Development Department
Mr. Thavipheth OULA	Deputy Director General of Tourism Development Department
Mrs. Phonemaly INTHAPHOM	Deputy Director General of Tourism Development Department

## Editors:

Mr. Sophab SOMSOUK	Director Tourism Research & Administrative Division
Mr. Bounthavy SISAVA	Deputy Director Tourism Research & Administrative Division
Mr. Xaynalong BOUNTA	Deputy Director Tourism Research & Administrative Division

## Assistants

Mr. Argame SYHARTH	Technical Tourism Research & Administrative Division
Mr. Vongphet XAYYALATH	Technical Tourism Research & Administrative Division
Mr. Daochan SINGKHAMYONG	Technical Tourism Research & Administrative Division
Ms. Ketmanyone BUAKHAMSITH	Technical Tourism Research & Administrative Division

## Provincials Coordinators

Ms. Vatsana BONGKHAMTAN	Attapeu	Provincial Information, Cultural and Tourism Department
Mr. Soulisit SOMSY	Bokeo	Provincial Information, Cultural and Tourism Department
Mr. Bounkham PHOMNOUIN	Bolikhamxay	Provincial Information, Cultural and Tourism Department
Mr. Sonepasert SOUKKASERM	Champassak	Provincial Information, Cultural and Tourism Department
Ms. Melavanh CHIENGTHEVA	Huaphanh	Provincial Information, Cultural and Tourism Department
Ms. Bounthavay DAMLUESA	Khammouane	Provincial Information, Cultural and Tourism Department
Mr. Linthon SOUVANTHONG	Luangnumtha	Provincial Information, Cultural and Tourism Department
Mr. Vanphaeng ITYHIPHON	Luangprabang	Provincial Information, Cultural and Tourism Department
Ms. Davone KHAMSAVAT	Oudomxay	Provincial Information, Cultural and Tourism Department
Mr. Sombat CHANTHALUNGSIY	Phongsaly	Provincial Information, Cultural and Tourism Department
Ms. Souchinda CHAMPAKHAM	Saravanh	Provincial Information, Cultural and Tourism Department
Mr. Chanthanchak KITTAVONG	Savannaket	Provincial Information, Cultural and Tourism Department
Mr. Khanpheng SIPASERT	Sekong	Provincial Information, Cultural and Tourism Department
Ms. Putmany KOEVITHONE	Vientiane Capital	Provincial Information, Cultural and Tourism Department
Ms. Tatsaly MILATTANAPHENG	Vientiane Province	Provincial Information, Cultural and Tourism Department
Mr. Khamphan AOUTHSIBOUNMY	Xaisomboun	Provincial Information, Cultural and Tourism Department
Ms. Vilaiphone CHANDA	Xaiyabuli	Provincial Information, Cultural and Tourism Department
Mr. Souksavanh VONGMACHANH	Xiengkhoung	Provincial Information, Cultural and Tourism Department

